

## Corridor EIS Archives

---

**From:** corridoreiswebmaster@anl.gov  
**Sent:** Wednesday, July 05, 2006 6:01 PM  
**To:** corridoreisarchives,  
**Subject:** Preliminary Draft Corridor Map Comment M0042

**Attachments:** WWEC\_Comments\_070506\_M0042.PDF



WWEC\_Comments  
070506\_M0042.PDF

Thank you for your comment, Michael Owens.

The comment tracking number that has been assigned to your comment is M0042. Once the comment response document has been published, please refer to the comment tracking number to locate the response.

Comment Date: July 5, 2006 06:00:39PM CDT

Preliminary Draft Corridor Map Comment: M0042

First Name: Michael  
Last Name: Owens  
Organization: Pacific Texas Pipeline and Transportation Company  
Address: 1501 W. Fountainhead Parkway  
Address 2: Suite 350  
City: Tempe  
State: AZ  
Zip: 85282  
Country: USA  
Email: mike.owens@pacifictexas.com  
Privacy Preference: Don't withhold name or address from public record  
Attachment: O:\L'Esperance\Clients\Pacific Texas\West-wide Energy Corridor PEIS\WWEC  
Comments 070506.PDF

Questions about submitting comments over the Web? Contact us at:  
corridoreiswebmaster@anl.gov or call the Preliminary Draft Corridor Map Webmaster at  
(630)252-6182.

## **West-wide Energy Corridor Programmatic EIS – Comments on Preliminary Draft Corridor Map**

Pacific Texas Pipeline and Transportation Company (Pacific Texas) would like to thank the four Federal agencies for the opportunity to comment on the preliminary draft energy corridor maps produced as part of the West-wide Energy Corridor Programmatic EIS process. As stated in our November 2005 EIS scoping comments, Pacific Texas is planning two important energy projects in the southwestern United States: the Picacho Natural Gas Pipeline (see Map 2) and the Pacific Texas Products Pipeline (see Map 3). More recently, Pacific Texas is planning another products pipeline, the Havasu Pipeline (see Map 4), that would extend from Phoenix, Arizona to the Las Vegas, Nevada area.

Pacific Texas has reviewed the preliminary draft energy corridor maps and would like to request the addition of three energy corridors to the West-Wide Energy Corridor Programmatic EIS as shown in Map 1. The first proposed corridor addition extends northwest off of an existing east-west corridor meeting up with an existing northwest corridor. This addition would provide for a route west of metropolitan Phoenix. The second proposed corridor addition provides a river crossing between Bullhead City, Arizona and Laughlin, Nevada and extends north along State Route 95 to Henderson, Nevada. This proposed right-of-way parallels the existing Southwest Gas Natural Gas Pipeline right-of-way. The third proposed corridor addition extends west along the southern Nevada border turning northwest to I-15 at Jean, Nevada where the new airport will be located (see detailed route information on Sheets 2 and 3).

The new energy corridor will provide Pacific Texas the opportunity to develop a gasoline pipeline from Texas to Las Vegas creating true fuel redundancy to this one pipeline city. The Havasu Pipeline will significantly increase the refined product supply for the City of Las Vegas and McCarran airport. Currently the region faces a 3% annual growth rate; triple that of the rest of the United States. The projected fuel demand will out pace supply by 2008. Southern Nevada is 100% dependent on gasoline from Southern California, delivered from a single pipeline system. Southern California has limited gasoline production facilities and will be unable to keep up with the refined products needs of the southwest region. In addition, Southern California imports over 28% (357,000 bpd) of its refined product needs from Northern California, Washington, Canada and foreign countries as far away as Norway, the UK, the Middle East and Indonesia. The California marine infrastructure is reaching its limit in accepting these cargos as well as the crude oil required for processing in California refineries.

The Las Vegas region's only real alternative is to begin utilizing refined products from Texas via eastern pipelines. In addition, Las Vegas is developing a new cargo transport airport in Jean, south of Las Vegas that will provide a stop over point for global air cargo carriers wishing access to the US Southwest, the fastest growing region in the United States. This will only increase the need to source additional refined products for the Southern Nevada region. The fuel supply problem has become so critical for the region, they have formed a Blue Ribbon Commission to study their alternatives and identify ways that they can incentivize developers to provide them alternatives. The development

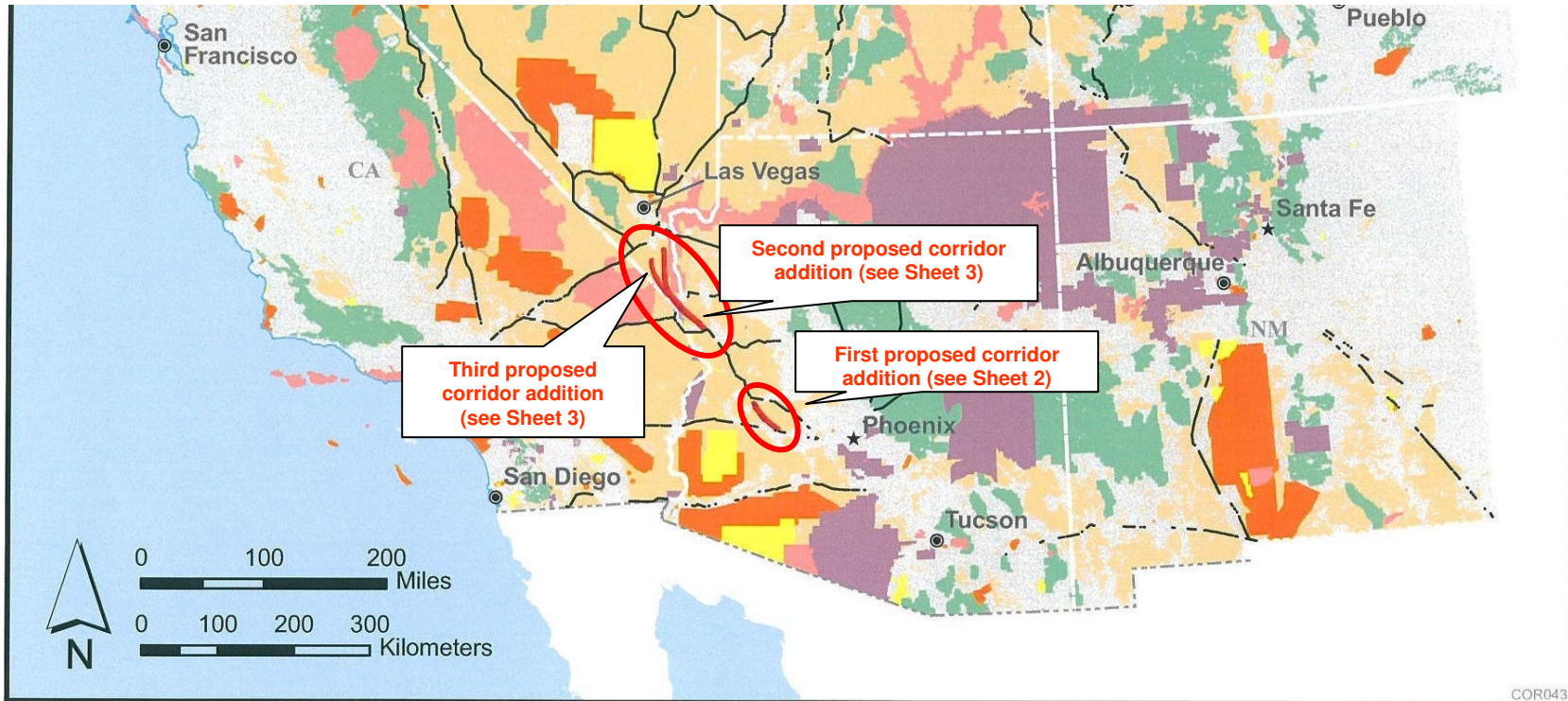
of a federal energy corridor extending from Western Arizona into Southern Nevada for pipeline use would accelerate and significantly support this region in their high growth needs. The project is vital to the fuel supply in the southwest, and we appreciate your consideration of adding this corridor to the study.

Pacific Texas remains interested in participating in the West-wide Energy Corridor process and continues to support the identification of energy corridors in the western United States. Please contact us if you have questions regarding these comments.

/Attachments

**Pacific Texas Pipeline and Transportation Company**  
**Mike Owens, President**  
**1501 W. Fountainhead Parkway, Suite 350**  
**Tempe, AZ 85282**  
**Phone: 480-994-8268**  
**Fax: 480-894-1974**

# Map 1 – Requested Additions to West-wide Energy Corridors

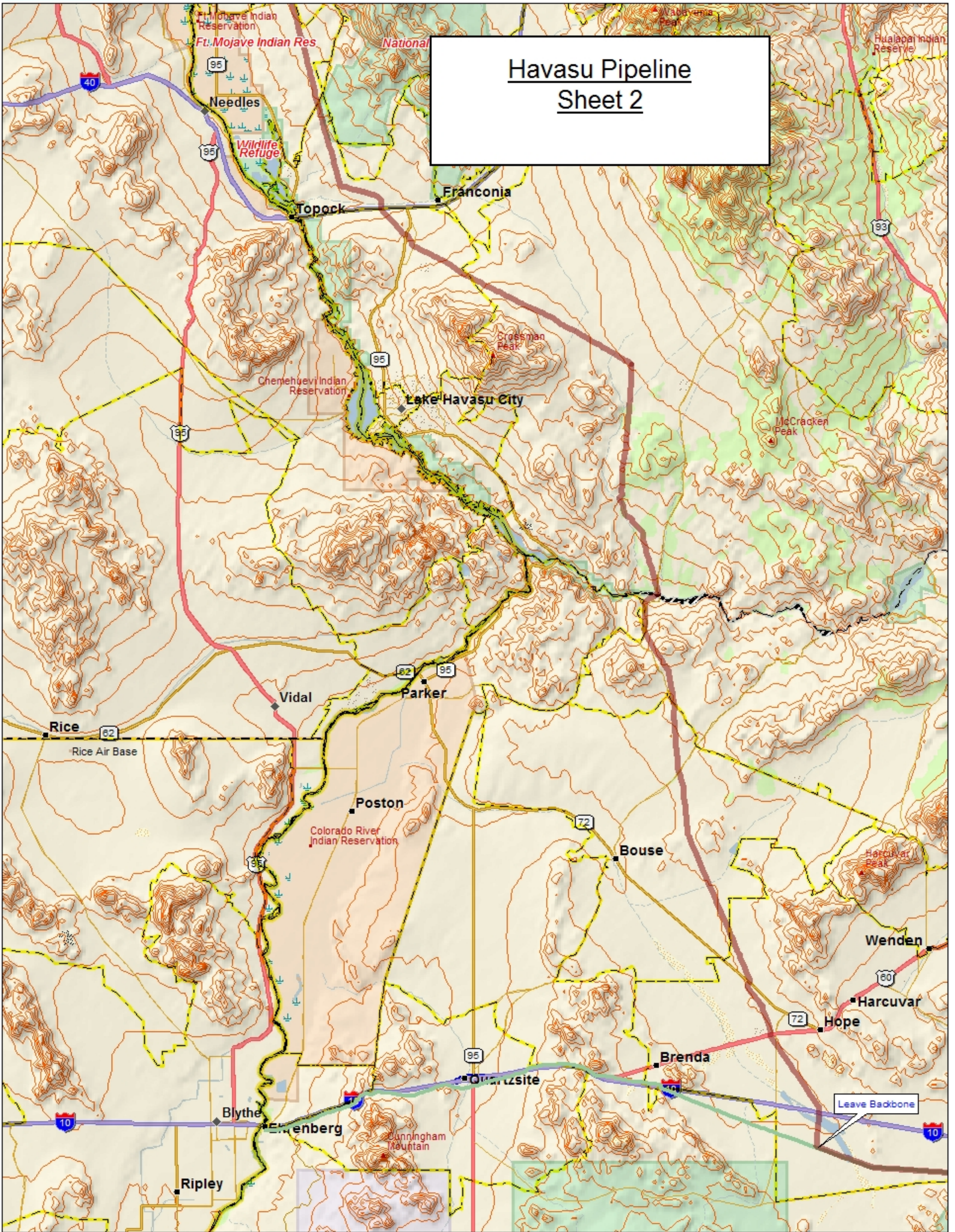


COR043

**Note:**

The potential energy corridors depicted on this map represent ongoing work by the Agencies to establish energy corridors in 11 Western states as required by the Energy Policy Act of 2005. The corridors are subject to change until they are officially established in August 2007. All officially designated corridors will be in compliance with applicable laws and regulations. The majority of the preliminary energy corridors utilize existing corridors and/or rights-of-way, but there are a small number of potential new corridor locations. Based upon the information and analyses developed in the West-wide Energy Corridor Programmatic EIS, the Agencies will designate energy corridors by amending their respective land use plans. Corridors shown on this map are not to scale. Widths of 3,500 feet are currently under consideration, but are too small to be clearly depicted on this map.

- Potential Energy Corridor (see Note)
- Bureau of Land Management
- U.S. Forest Service
- U.S. Department of Defense
- National Park Service
- U.S. Fish and Wildlife Service
- Tribal Land



Data use subject to license.

© 2004 DeLorme. XMap®/GIS Editor.

www.delorme.com

MN (12.2° E)

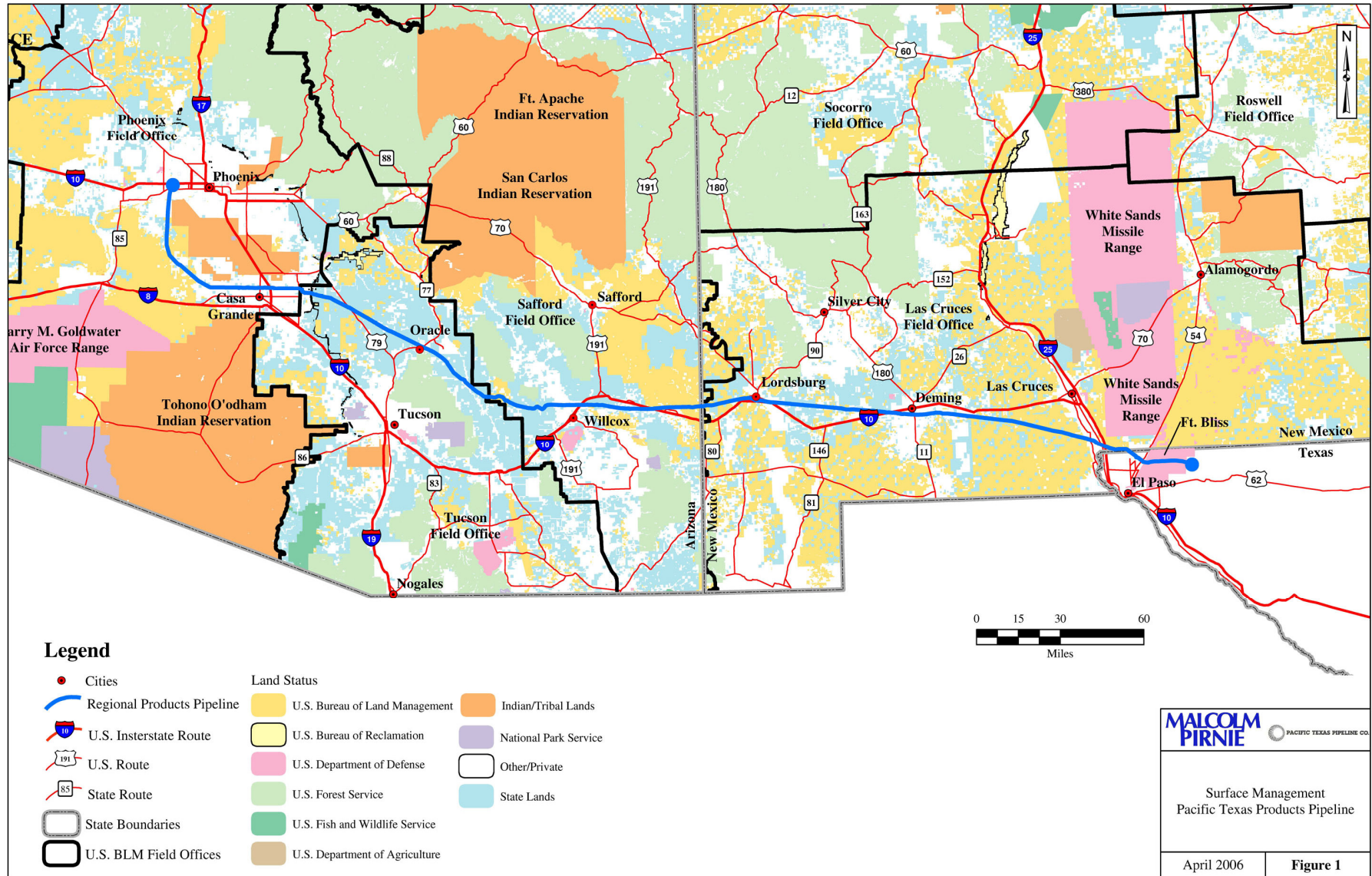
0 4 8 12 16 20 mi  
Data Zoom 8-2



# Map 2 - Picacho Natural Gas Pipeline



# Map 3 – Pacific Texas Products Pipeline



m://4592000/GIS/Projects\_MXD/Products\_Pipeline/Products\_pipeline\_with\_land\_ownership.mxd

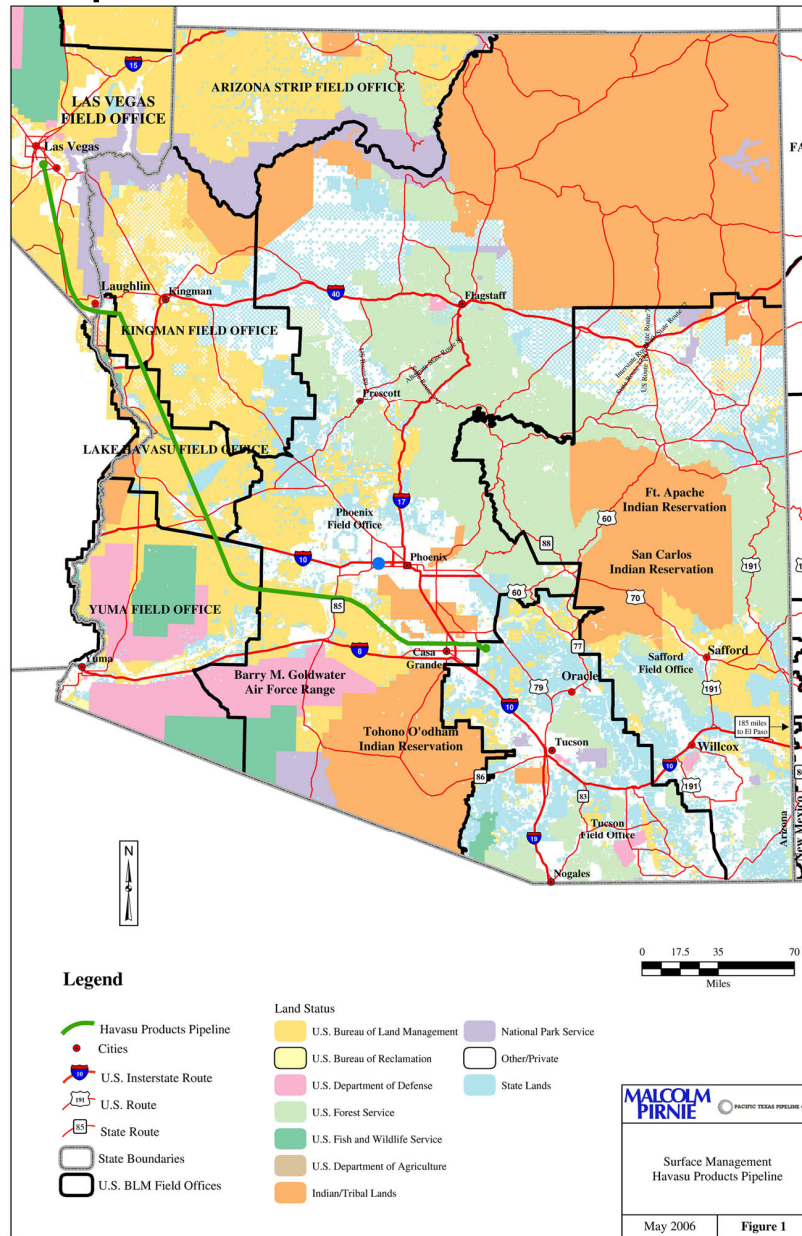
**MALCOLM PIRNIE** PACIFIC TEXAS PIPELINE CO.

Surface Management  
Pacific Texas Products Pipeline

April 2006 **Figure 1**



# Map 4 - Havasu Pipeline



m:\492000\GIS\Projects\_MXD\Havasu Pipeline\Figure1-Havasu\_Products\_Pipeline.mxd