

Corridor EIS Archives

From: corridoreiswebmaster@anl.gov
Sent: Friday, July 07, 2006 10:25 AM
To: corridoreisarchives,
Subject: Preliminary Draft Corridor Map Comment M0048

Attachments: Comments_to_DOE_on_PEIS_preliminary_map_M0048.pdf



Comments_to_DOE
_on_PEIS_prelim...

Thank you for your comment, Steve Waddington.

The comment tracking number that has been assigned to your comment is M0048. Once the comment response document has been published, please refer to the comment tracking number to locate the response.

Comment Date: July 7, 2006 10:25:02AM CDT

Preliminary Draft Corridor Map Comment: M0048

First Name: Steve
Last Name: Waddington
Organization: Wyoming Infrastructure Authority
Address: 109 E. 17th Street
Address 2: Suite B
City: Cheyenne
State: WY
Zip: 82001
Country: USA
Email: stevew@wyia.org
Privacy Preference: Don't withhold name or address from public record
Attachment: C:\Documents and Settings\stevew\My Documents\WIA General\Comments to DOE on PEIS preliminary map.pdf

Comment Submitted:

Attached please find the comments submitted today on behalf of the Wyoming Infrastructure Authority, regarding the draft corridor map. Thank you for taking these comments on board.

Questions about submitting comments over the Web? Contact us at:
corridoreiswebmaster@anl.gov or call the Preliminary Draft Corridor Map Webmaster at
(630)252-6182.



WYOMING INFRASTRUCTURE AUTHORITY

200 E. 17th Street, Suite B
Cheyenne, Wyoming 82001

July 10, 2006

Office of Electricity Delivery and Energy Reliability
U.S. Department of Energy
1000 Independence Avenue, S.W.
Washington, DC 20585

RE: Comments on Preliminary Energy Corridor Map

The Wyoming Infrastructure Authority (“WIA”) appreciates this opportunity to comment on the Department of Energy’s (“DOE”) preliminary energy corridor map associated with the Programmatic Environmental Impact Statement (“PEIS”) being prepared in accordance with Section 368 of the Energy Policy Act of 2005.

The WIA was created in 2004, by the state legislature, and tasked with diversifying and growing Wyoming’s economy through the development of electric transmission infrastructure. The Authority is also responsible for planning, financing, building, maintaining, and operating electric transmission and related facilities and may:

- issue revenue bonds¹ to finance new transmission lines to support new generation facilities in the state;
- own and operate lines in instances where private investment is not offered;
- enter into partnerships with public or private entities to build and upgrade transmission lines;
- investigate, plan, prioritize and establish corridors for electric transmission in Wyoming; and,
- establish and charge fees and rates for use of its facilities in consultation with the public service commission and other related government entities.

¹ The WIA bonding capability is unlimited for transmission projects it would own. The WIA can also issue up to \$1 billion in bonds to help finance transmission infrastructure owned by other parties. The WIA’s first financing was in September, 2005. The WIA issued \$34.5 million in bonds to contribute to the financing of a transmission line in Wyoming that will be owned and operated by Basin Electric Power Cooperative.

The WIA is an instrumentality of the State of Wyoming and is governed by a board composed of five (5) members appointed by the Governor, with the advice and consent of the State Senate.

The WIA has three public/private development partnerships underway for transmission upgrades to support the development of coal and wind generation in Wyoming. We want to make DOE and the other Federal Agencies aware of these project developments and request that these corridors be given full consideration in your pending PEIS.

Wyoming-West

We are working with the Western Area Power Administration (“WAPA”) and National Grid USA to develop transmission to enable generation in southwest Wyoming to reach the proximate growing energy market in the Salt Lake City area. The corridor we are focusing on crosses the eastern section of the Flaming Gorge National Recreation Area generally traversing south of Rock Springs, Wyoming to Vernal, Utah. This path will originate electrically somewhere near the Jim Bridger complex in southwest Wyoming, and run directly south along the path of two existing lower-voltage lines owned and operated by WAPA, and interconnecting at the Bonanza substation in northwest Utah. Most of this corridor is across Federally-managed lands so it is crucially important that the DOE PEIS include this path. If our Wyoming-West project is successful, this existing corridor will be expanded or rebuilt and allow significant low-cost Wyoming resources to help meet the demand in the rapidly growing Salt Lake City area.

The WIA supports the comments you will receive from National Grid USA and respectfully requests that full consideration be given to their submittal. Moreover we strongly encourage DOE to include the Flaming Gorge corridor in its PEIS.

TOT3

WIA’s second development partnership is with Trans-Elect and WAPA. TOT3 refers to the five existing transmission lines that connect the coal-rich Powder River Basin (“PRB”) in northeast Wyoming with the Front Range and Denver markets in eastern Colorado. We are working to expand this constrained corridor. Since there is less Federal land along this corridor, it is not clear from DOE’s draft corridor map whether DOE is fully taking into account the potential development of PRB mine-mouth coal generation and high-quality wind generation to meet growing demands along the Front Range. We ask that you take the pending TOT3 upgrade into account in your PEIS.

The WIA also supports the comments you will receive from Trans-Elect and respectfully requests that full consideration be given to the TOT3 project as described in their submittal.

TransWest Express

WIA is also working closely with Arizona Public Service (“APS”) as it leads the feasibility study of a proposed two 500-kV transmission lines (or alternatively, one DC line) enabling Wyoming generation to be delivered to the rapidly growing Phoenix area and elsewhere in the southwest. Several routings are being considered in the feasibility study, all originating in the PRB area of Wyoming, with alternative routes either across western Colorado or through central Utah, with termination points at either Phoenix or Las Vegas.

The WIA supports the comments you will receive from APS and respectfully requests that full consideration be given to the alternative routings under consideration for this important transmission project in the PEIS.

Two maps are attached to supplement these comments. Attachment 1 depicts the corridors available to Wyoming for exporting its energy production by wire. Of these corridors, we want to emphasize the importance to Wyoming that DOE include the Flaming Gorge route and the TOT3 routes in the PEIS. Attachment 2 depicts the alternative routes being considered in the TransWest Express feasibility study. These routes must also all be considered in PEIS.

The WIA looks forward to working with DOE and other Federal Agencies as Wyoming continues its efforts to stimulate development of needed transmission assets in the Western interconnection.

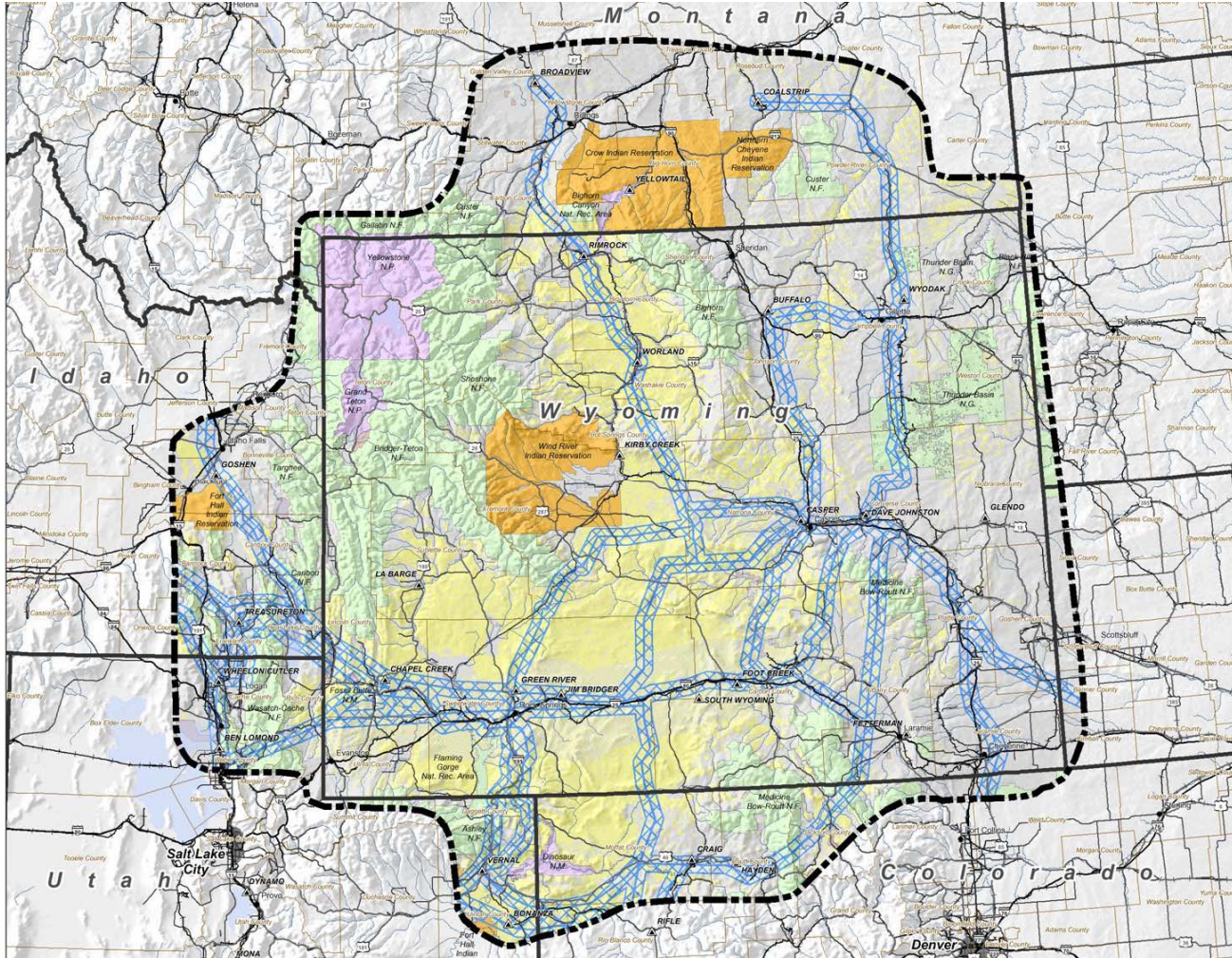
Sincerely,

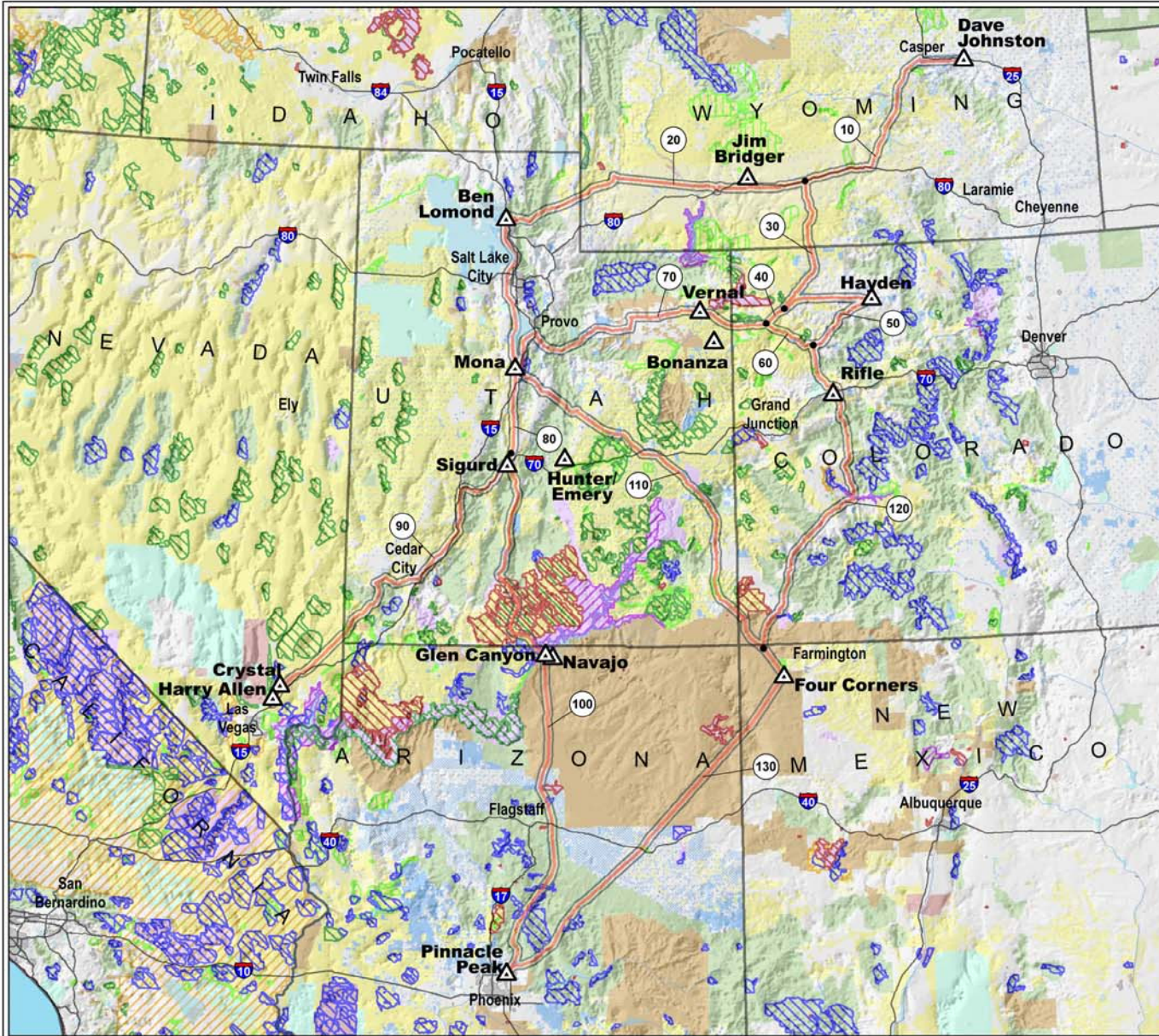
Steve Waddington
Executive Director

Attachments (2)

Cc: Governor Dave Freudenthal
Honorable Michael B. Enzi
Honorable Craig Thomas
Honorable Barbara Cubin

ATTACHMENT 1: WYOMING'S TRANSMISSION CORRIDORS





Surface Land Management

LEGEND

- 6 Mile Study Corridor
- Bureau of Land Management
- Bureau of Indian Affairs
- Department of Defense
- National Park Service
- State Land
- U.S. Fish and Wildlife Service
- U.S. Forest Service
- Private/Other
- Area of Critical Environmental Concern
- National Monument
- National Recreation Area
- Natural Conservation Area
- Wilderness
- Wilderness Study Area

REFERENCE FEATURES

- Major Substation
- Existing Pipeline
- Link Identification Number
- Link Node
- Interstate
- Intra-state
- Water Features (Lake, River, etc.)
- Railroad

SOURCE

Surface Land Management: National Atlas, 2005
 Road, River, Waterbody: Streetmap USA, 2005

June 30, 2006

