

Corridor 107-268

This corridor abstract is undergoing agency review at this time and will be updated shortly when feedback has been incorporated.

Corridor 107-268

Angeles National Forest Southeast

Introduction

Corridor 107-268 extends southwest to northeast from near San Fernando, CA to the east of Acton, CA. The federally-designated portions of this corridor are entirely on National Forest System land, with a 1,000-ft width over its entire extent. It is designated for electrical transmission projects. The corridor spans a 19.6-mile distance, with 17.3 designated centerline miles. The designated area is 2,098 acres/3.3 square miles. This corridor is entirely in Los Angeles County, California and entirely within Angeles National Forest. This corridor is also entirely in Priority Region 1 for purposes of the regional review.

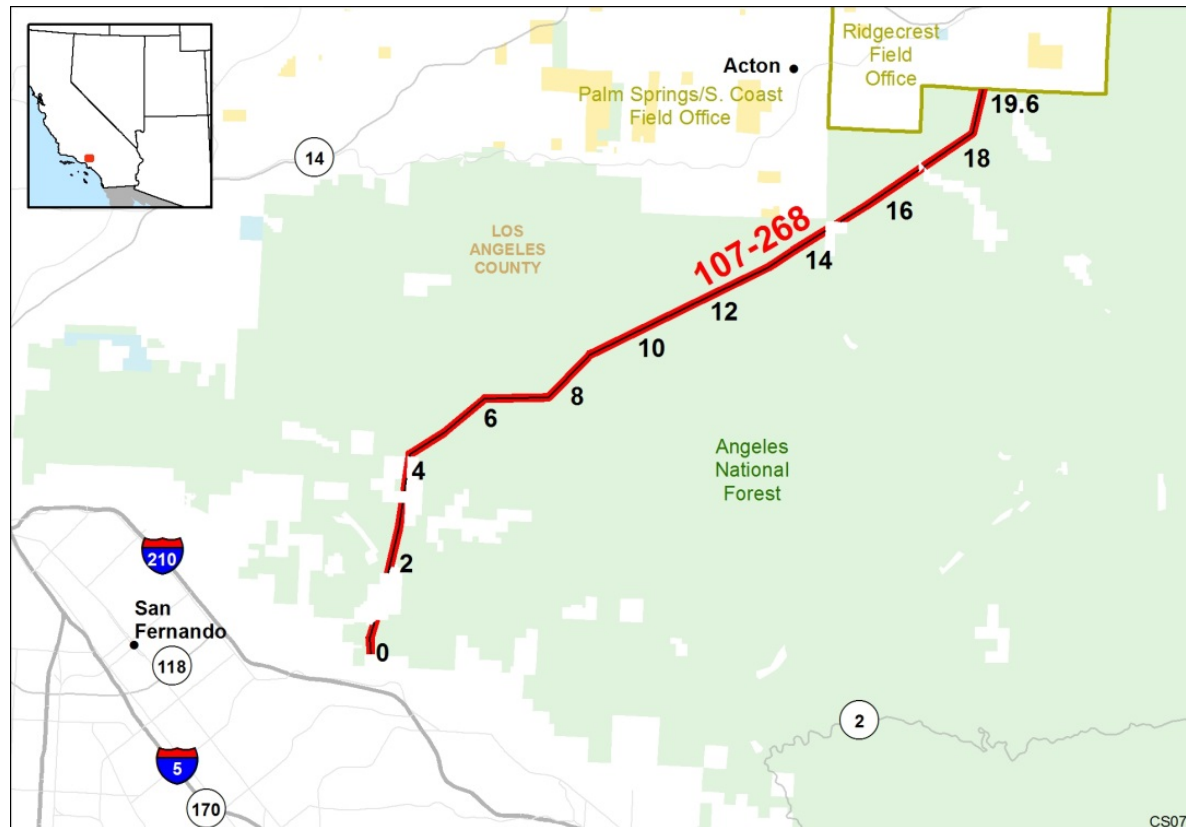


Figure 1. Corridor 107-268 (Key for Figures 1-2 can be found on the last page of the abstract)

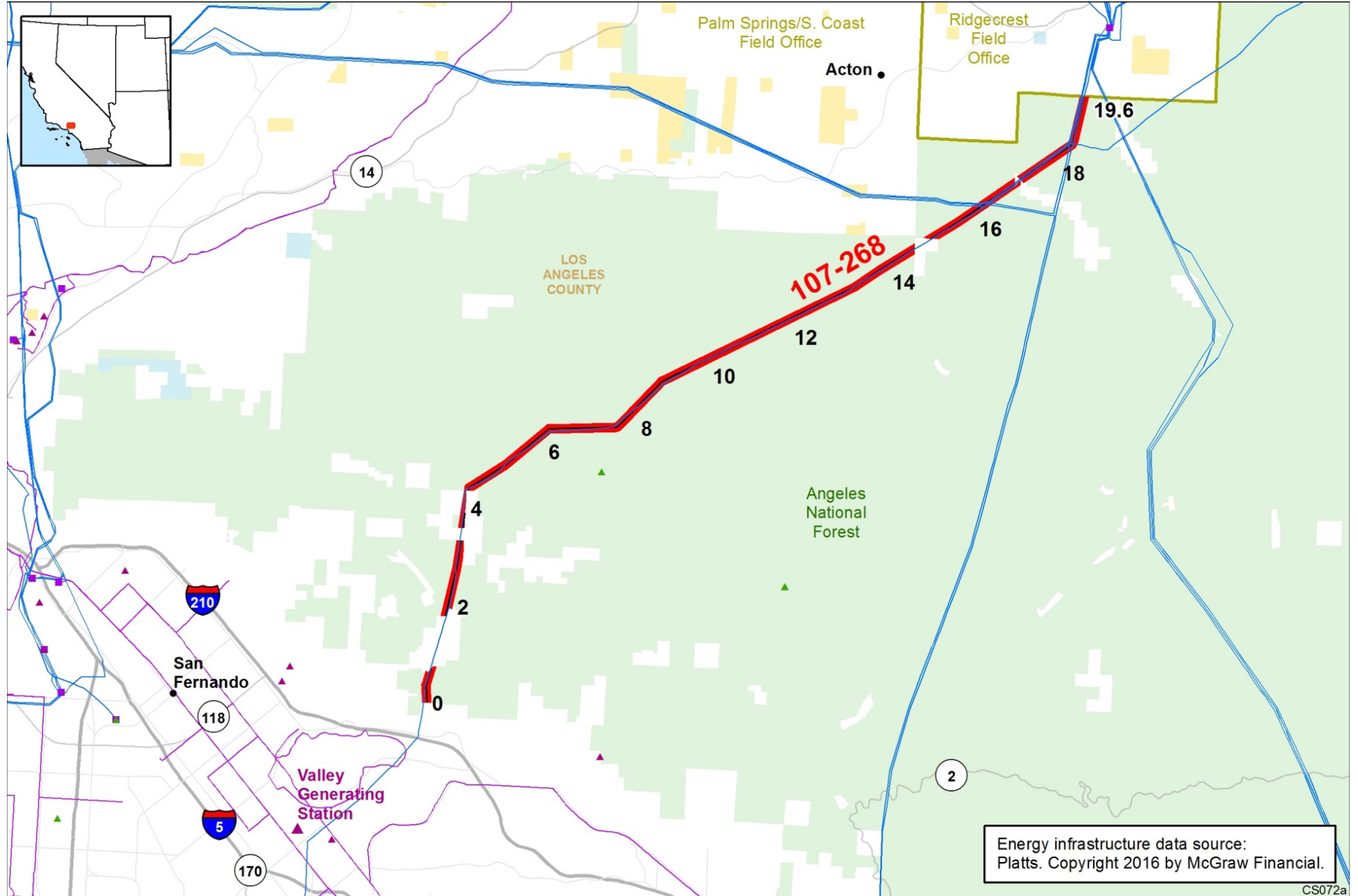


Figure 2. Corridor 107-268, including existing energy infrastructure

Corridor Rationale

During scoping for the West-wide Energy Corridor Programmatic Environmental Impact Statement (WWEC PEIS), routes generally following this route were suggested by Western Transmission Protocol. Current approved projects occupying parts of the corridor includes a 500-kV electric transmission line occupied throughout its length, and for a short distance at the north end, by a 230-kV electric transmission line. The Angeles National Forest had no comments regarding this corridor during interviews for the Corridor Study. Platts data indicate the planned Tehachapi Renewable Transmission Project 500 kV line and six existing transmission lines are within the corridor: Los Angeles Dept. of Water & Power (500 kV), Southern California Edison Co. (69 kV), Southern California Edison Co. (220 kV), two Southern California Edison Co. lines (230 kV), and a separate third 230 kV transmission line. A Los Angeles Dept. of Water & Power hydroelectric plant and substation are within one mile of the corridor centerline and several roads cross through the corridor.

Corridor of Concern Status

Corridor 107-268 is a Corridor of Concern. Concerns regarding the National Forest and citizen-proposed Wilderness were identified in the Settlement Agreement. These issues are highlighted in yellow in the Corridor Analysis table below.

Corridor Analysis

Energy Planning Opportunities

- Appropriate and acceptable uses
- WWEC Purpose (e.g., renewable energy)
- Transmission and pipeline capacity opportunity

Energy Planning Concerns and Opportunities

- Physical barrier
- Jurisdictional concern
- Corridor alignment and spacing

- Transmission and pipeline capacity concern

Land Management Responsibilities and Environmental Concerns

- Acoustics
- Air quality
- Climate change
- Cultural resources
- Ecological resources
- Environmental Justice
- Hydrological resources
- Lands and Realty

- Lands with wilderness characteristics

- Livestock Grazing

- Paleontology

- Public Access and Recreation

- Socioeconomics

- Soils/erosion

- Specially designated areas

- Tribal concerns

- Visual resources

- Wild horses and burros

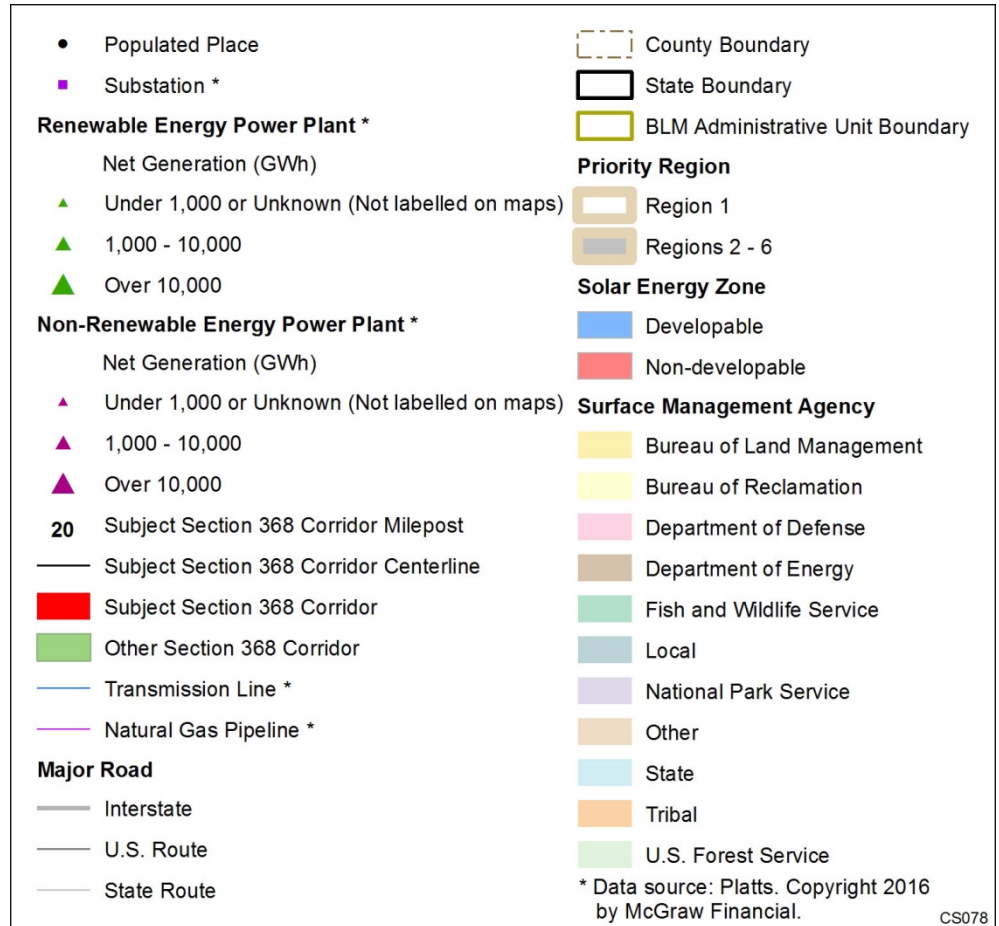
- Interagency Operating Procedures**

ID	Agency	Agency Jurisdiction	County	Primary Concern/ Opportunity	Length of Affected Corridor (by Milepost [MP])	Source/Context	BLM/FS Review and Analysis
ENERGY PLANNING OPPORTUNITIES							
<i>Appropriate and Acceptable Uses</i>							
107-268 .001	FS	Angeles National Forest	Los Angeles, CA	Aliso Canyon Rd	MP 17.3 to 17.5	GIS Analysis	

ID	Agency	Agency Jurisdiction	County	Primary Concern/ Opportunity	Length of Affected Corridor (by Milepost [MP])	Source/Context	BLM/FS Review and Analysis
107-268 .002	FS	Angeles National Forest	Los Angeles, CA	Little Tujunga Canyon Rd	MP 2.0 to 2.6; MP 3.2 to 3.3; MP 3.6; MP 3.8	GIS Analysis/Little Tujunga Canyon Rd crosses through corridor multiple times	
107-268 .003	FS	Angeles National Forest	Los Angeles, CA	Los Angeles Dept. of Water & Power 500 kV line	MP 0.0 to 18.6	GIS Analysis	
107-268 .004	FS	Angeles National Forest	Los Angeles, CA	Unknown structure partially within corridor	MP 14.2	GIS Analysis	
107-268 .005	FS	Angeles National Forest	Los Angeles, CA	Southern California Edison Co. 69 kV and 230 kV lines	MP 16.4 to 16.6; MP 18.4 to 19.6	GIS Analysis	
107-268 .006			Los Angeles, CA	Unknown structure partially within corridor	MP 17.4	GIS Analysis/ Unknown structure partially within corridor is not on BLM or USFS land	
107-268 .007	FS	Angeles National Forest	Los Angeles, CA	Southern California Edison Co. 220 kV line	MP 18.5 to 19.6	GIS Analysis	
107-268 .008	FS	Angeles National Forest	Los Angeles, CA	Southern California Edison Co. 230 kV lines	MP 16.3 to 19.6	GIS Analysis	
ENERGY PLANNING CONCERNS							
<i>Location-Specific Physical Barrier</i>							
107-268 .009	FS	Angeles National Forest	Los Angeles, CA	Corridor narrows.	MP 3.6 to 4.5	GIS Analysis/ Corridor narrows to ~270 ft. because of a non-FS inholding. The corridor is occupied by 1 project already.	
107-268 .010	FS	Angeles National Forest	Los Angeles, CA	Multiple projects	MP 16.3 to 16.7	GIS Analysis/multiple projects crossing and following corridor	
107-268 .011	FS	Angeles National Forest	Los Angeles, CA	Multiple projects	MP 18.4 to 18.8	GIS Analysis/ multiple projects crossing and following corridor	

ID	Agency	Agency Jurisdiction	County	Primary Concern/ Opportunity	Length of Affected Corridor (by Milepost [MP])	Source/Context	BLM/FS Review and Analysis
LAND MANAGEMENT RESPONSIBILITIES AND ENVIRONMENTAL CONCERNS							
Ecology: Special Status Animal Species							
107-268 .012	FS	Angeles National Forest	Los Angeles, CA	Southwestern willow flycatcher and Santa Ana sucker	Critical habitat runs along north and south of corridor. Closest point is 1.2 km from southern end of corridor (MP 0)	RFI/ Southwestern willow flycatcher and Santa Ana sucker critical habitat within 2km of segment	
Lands and Realty: Rights-of-Way and General Land Use							
107-268 .013	FS	Angeles National Forest	Los Angeles, CA	BLM jurisdiction	MP 0.6 to 0.7, 1.8 to 2.0, 3.0 to 3.3, 3.6 to 4.4, 17.2 to 17.5	GIS Analysis/45 acres were originally designated as part of this corridor but are no longer on federal land according to the 5/12/2015 version of BLM Surface Management Agency data	
Specially Designated Areas							
107-268 .014	FS	Angeles National Forest	Los Angeles, CA	California Desert Conservation Area	MP 19.6	GIS Analysis/ California Desert Conservation Area is adjacent to corridor on northern end	
107-268 .015	FS	Angeles National Forest	Los Angeles, CA	Citizen Proposed Wilderness	Data needed	Settlement Agreement	
107-268 .016	FS	Angeles National Forest	Los Angeles, CA	Pacific Crest National Scenic Trail	MP 10.3 to 10.5	GIS Analysis	Under review with FS, BLM, and NPS Trail Administrators.

Abbreviations: ACEC = Area of Critical Environmental Concern; BLM = Bureau of Land Management; BOR = Bureau of Reclamation; FO = Field Office; FS = Forest Service; GIS = geographic information system; MP = milepost; PEIS = Programmatic Environmental Impact Statement; RFI = Request for Information; TCA = Tortoise Conservation Area; VRM = Visual resource Management; WECC = Western Energy Coordinating Council; WWEC = West-wide Energy Corridor



Key