

Corridor 132-133

De Beque to Maybell Corridor

Corridor Rationale

Input regarding alignment from PacifiCorp and the Western Utility Group during the WWEC PEIS suggested following this route. The most recently authorized ROWs in the corridor include a 500-kV AC transmission line intersecting at MP 65 to 92, a pipeline intersecting at MP 80 to 81, a 12-inch pipeline intersecting at MP 7, a 36-inch pipeline intersecting at MP 51 to 52) and 10 others since 2009.

Corridor location:

Colorado (Garfield, Mesa, Moffat, and Rio Blanco Co.)

BLM: Grand Junction, Little Snake, and White River Field Offices

Regional Review Region(s): Region 3

Corridor width, length:

Width variable from 2,250 - 10,500 ft

51.6 miles of designated corridor

103.1 mile-posted route, including gaps

Sec 368 energy corridor restrictions: (Y)

- corridor is underground only

Corridor of concern (N)

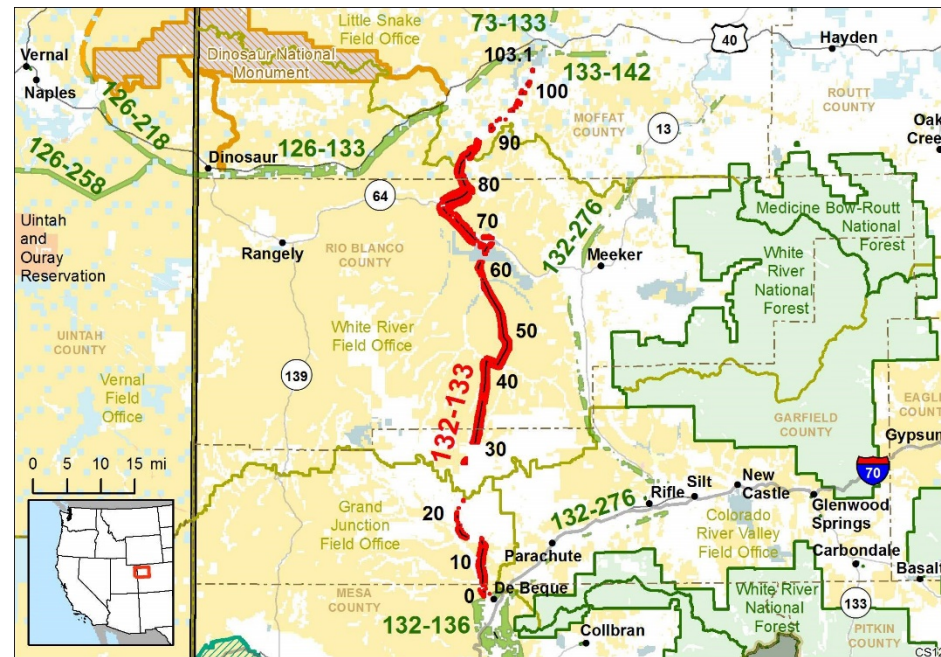


Figure 1. Corridor 132-133

Corridor history:

- Locally designated corridor prior to 2009 (N)
- Existing infrastructure (Y)
 - Electric transmission:
 - 69-kV line (MP 1 to MP 7)
 - 138-kV line (MP 46 to MP 49 and MP 65 to MP 76)
 - Pipelines:
 - 1 to several natural gas (MP 2 to MP 15, MP 31 to MP 41, and MP 46 to MP 72)
 - Highways
 - I-70 (MP 1 to MP 7)
 - CO Hwy 64 (MP 67 to MP 76)
- Energy potential near the corridor (N)
- Corridor changes since 2009 (Y)
 - 2015 Grand Junction RMP modified the corridor slightly to avoid ACECs.

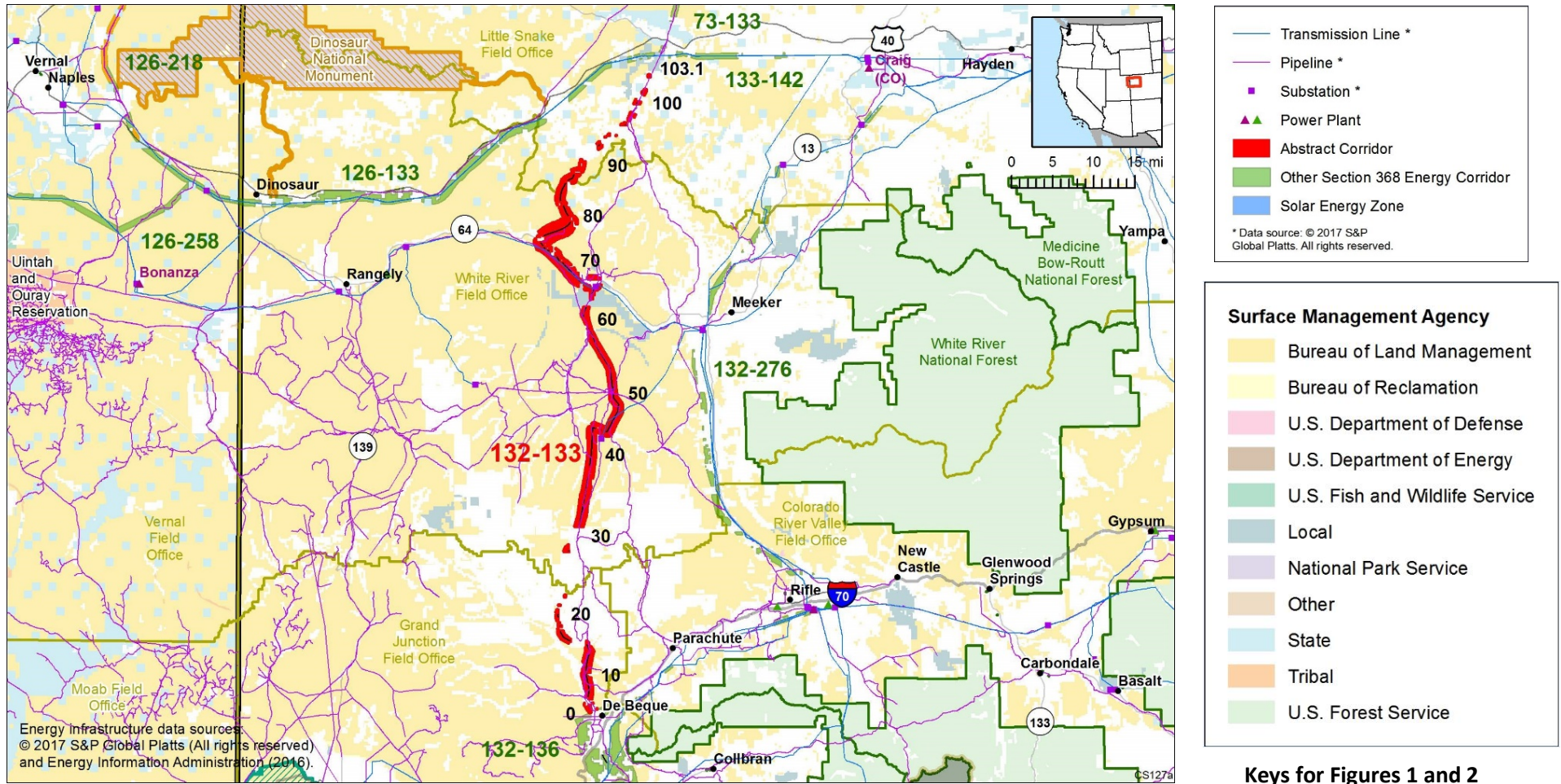


Figure 2. Corridor 132-133 and nearby electric transmission lines and pipelines

Conflict Map Analysis

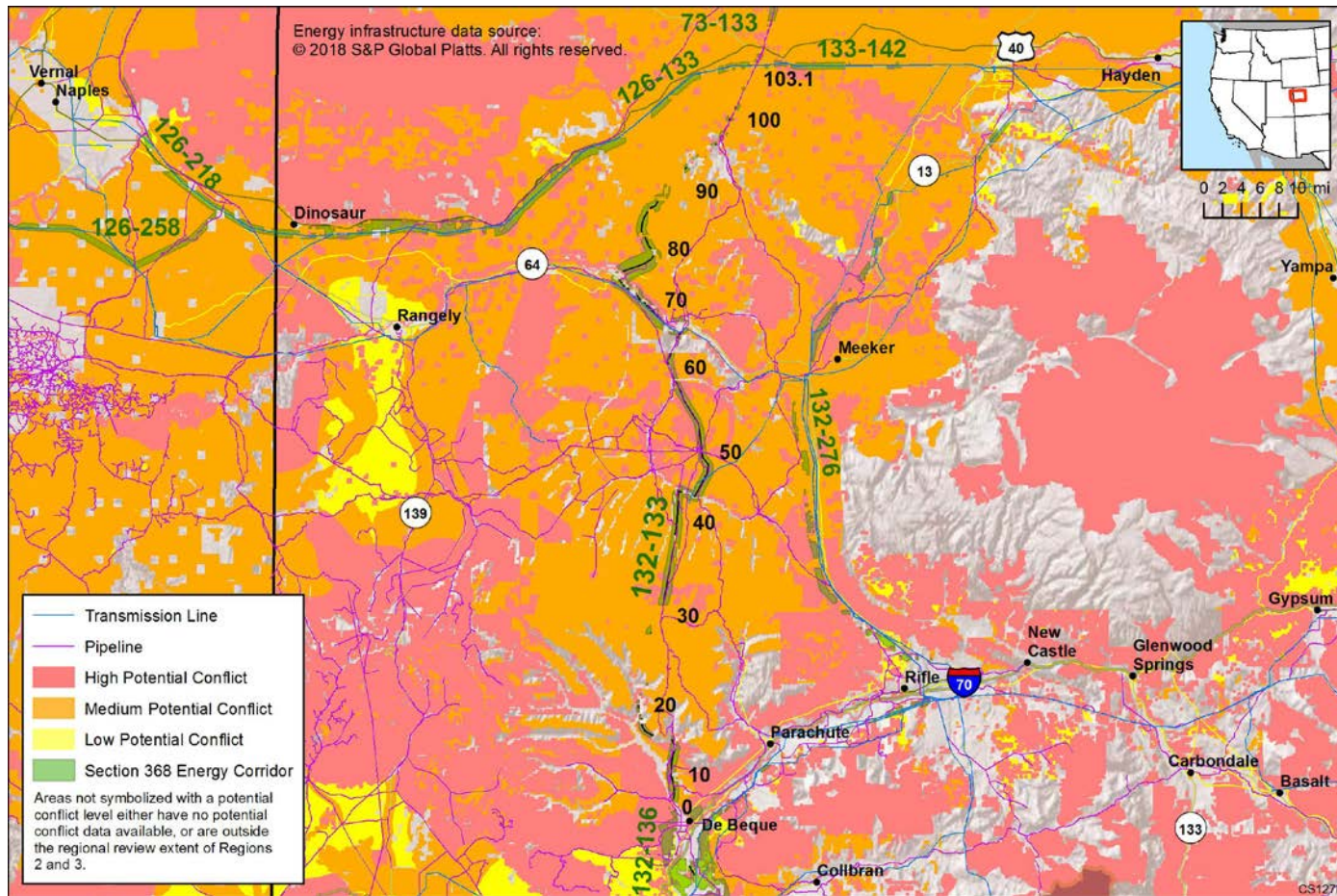


Figure 3. Map of Conflict Areas in Vicinity of Corridor 132-133

Figure 3 reflects a comprehensive resource conflict assessment developed to enable the Agencies and stakeholders to visualize a corridor’s proximity to environmentally sensitive areas and to evaluate options for routes with lower potential conflict. The potential conflict assessment (low, medium, high) shown in the figure is based on [criteria](#) found on the WWEC Information Center at www.corridoreis.anl.gov. To meet the intent of the Energy Policy Act and the Settlement Agreement siting principles, corridors may be located in areas where there is potentially high resource conflict; however, where feasible, opportunity for corridor revisions should be identified in areas with potentially lower conflict.

Visit the 368 Mapper for a full view of the Potential conflict map (<https://bogi.evs.anl.gov/section368/portal/>)

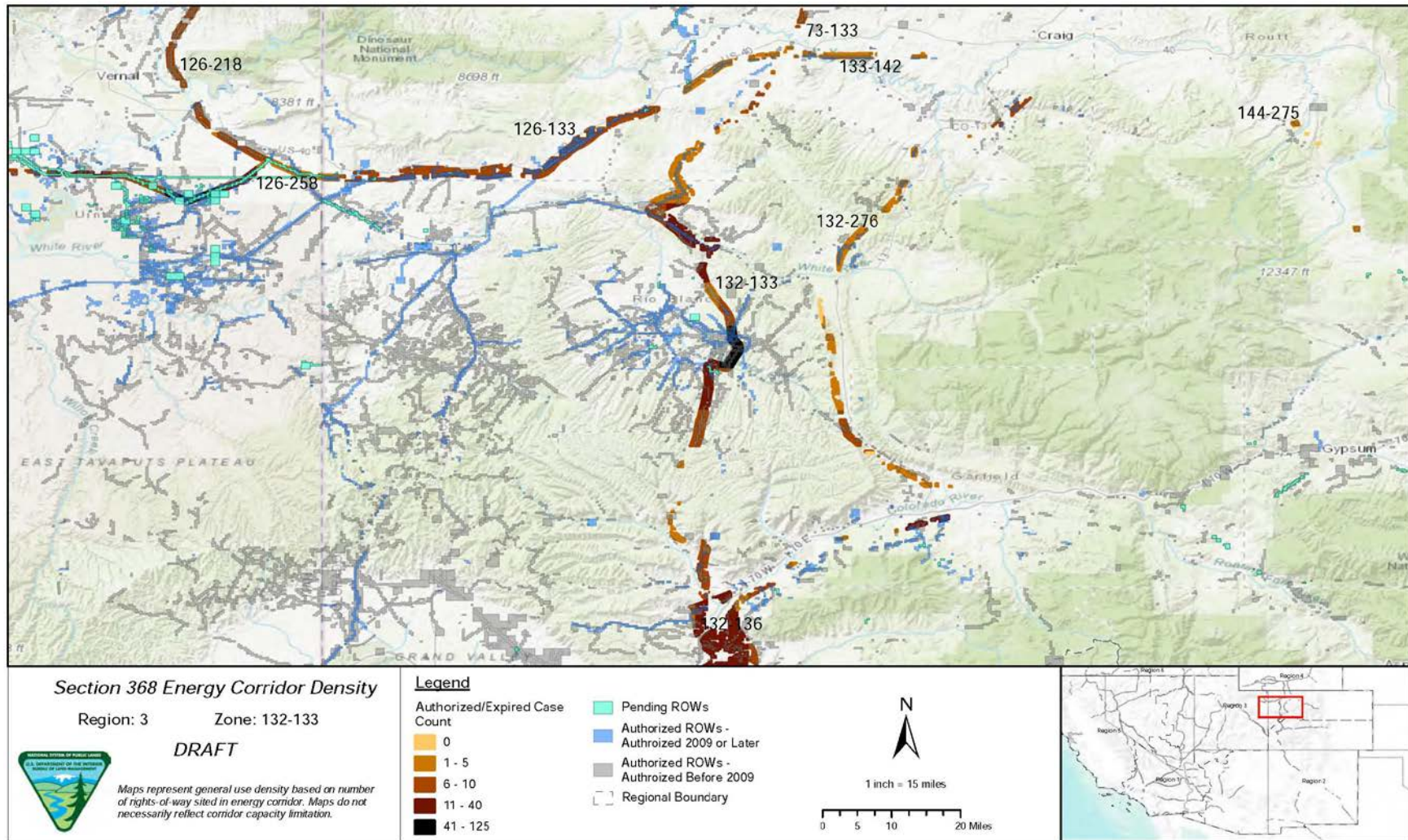


Figure 4. Corridor 132-133, Corridor Density Map

Figure 4 shows the density of energy use to assist in evaluating corridor utility. ROWs granted prior to the corridor designation (2009) are shown in grey; ROWs granted after corridor designation are shown in blue; and pending ROWs under current review for approval are shown in turquoise. Note the ROW density shown for the corridor is only a snapshot that does not fully illustrate remaining corridor capacity. Not all ROWs have GIS data at the time this abstract was developed. BLM and USFS are currently improving their ROW GIS databases and anticipate more complete data in the near future.

General Stakeholder Feedback on Corridor Utility

Stakeholders did not provide specific input on corridor utility.

Corridor Review Table

The table below captures details of the Agencies’ review of the energy corridor. Consideration of the general corridor siting principles of the 2012 Settlement Agreement framed each corridor review, to identify potential improvements to maximize corridor utility and minimize impacts on the environment. Initial Agency analysis is provided to facilitate further discussion during stakeholder workshops.

CORRIDOR 132-133 REVIEW TABLE							
ID	Agency	Agency Jurisdiction	County	Primary Issue	Corridor Location (by Milepost [MP])	Source	Agency Review and Analysis ^{1, 2}
ENVIRONMENTAL RESOURCE ISSUES							
<i>Specially Designated Areas</i>							
132-133 .001	BLM	Grand Junction FO	Mesa, CO	South Shale Ridge, and Pyramid Rock ACECs	MP 7 to MP 8	GIS Analysis: ACEC adjacent to corridor.	The Grand Junction RMP narrowed the corridor to eliminate conflict with the South Shale Ridge, and Pyramid Rock ACECs, however, there is an opportunity to re-route the corridor to accommodate additional BLM land and continue to avoid the ACECs. (2).
132-133 .002	BLM	White River FO	Rio Blanca, CO	White River ACEC	MP 69 to MP 77	GIS Analysis: ACEC intersects corridor.	The White River RMP has no ROW exclusion or avoidance prescriptions for a utility corridor being located within the ACEC. (3)
<i>Ecology</i>							
132-133 .003	BLM	Grand Junction FO	Mesa and Garfield, CO	DeBeque Phacelia critical habitat (ESA-listed: threatened)	MP 7 to MP 9	GIS Analysis: critical habitat intersects corridor. Agency Input: habitat is present in the corridor from MP 0 to MP 9.	During planning efforts for the Grand Junction RMP, the corridor was narrowed to eliminate conflict with the South Shale ACEC, which contains habitat for Colorado Hookless Cactus and DeBeque Phacelia. There is an opportunity to re-route the corridor to accommodate additional BLM land and avoid the ACEC. (2)
132-133 .004	BLM	White River FO	Rio Blanco	Dudley Bluffs Twinpod occupied habitat (ESA-listed: threatened)	MP 62	GIS Analysis: occupied habitat intersects corridor.	Occupied habitat for threatened and endangered plant species is a ROW exclusion area and could result in applicants having to find alternative

CORRIDOR 132-133 REVIEW TABLE							
ID	Agency	Agency Jurisdiction	County	Primary Issue	Corridor Location (by Milepost [MP])	Source	Agency Review and Analysis ^{1,2}
							routes or sites. Mitigation would be applied at the project level on a case-by-case basis with coordination between BLM and USFWS. (3)
132-133 .005	BLM	Grand Junction FO, White River FO, and Little Snake FO	Garfield, Rio Blanco, and Moffat, CO	GRSG (BLM and USFS sensitive species)		RFI: re-route or exclude new infrastructure ROWs and avoid all new energy infrastructure development within GRSG PACs (23% overlap). Use full mitigation hierarchy to address potential impacts within 4 mi of important GRSG breeding areas. Re-route to avoid "Very High" risk to permeability, and work closely with state and Federal wildlife and science Agencies to ensure that connectivity is maintained.	The NWCO GRSG RMP: -Manage areas within PHMA as avoidance areas for BLM ROW permits. -Manage areas within GHMA as avoidance areas for major transmission lines greater than 100 kV and pipelines greater than 24 in. and minor BLM ROW permits. -PHMA and GHMA are designated as avoidance areas for high-voltage transmission line ROWs, except for the transmission projects specifically identified below: -ROWs may be issued after documenting that the ROWs would not adversely affect GRSG populations -Any new projects within PHMA would be subject to the 3% disturbance cap. Within existing designated utility corridors, the 3% disturbance cap may be exceeded at the project scale if the site -specific NEPA analysis indicates that species plan objectives will be achieved. (3)
				GRSG PHMA	MP 16, MP 18 to MP 19, MP 24 to MP 38, MP 51 to MP 54, MP 81 to MP 92, MP 94 to MP 95, MP 97 to MP 103	GIS Analysis: GRSG PHMA intersects corridor.	
				GRSG GHMA	MP 29 to MP 39, MP 53 to MP 54, MP 6 to MP 68, MP 80 to MP 95	Comment on abstract: support existing designations of PHMAs and GHMAs. Recommend that corridor be re-routed to avoid PHMA and GHMA. In areas where existing transmission lines are present, recommend the disturbance be within the existing infrastructure footprint. If avoidance or co-location is not possible, recommend burying the transmission line and instituting compensatory mitigation.	

CORRIDOR 132-133 REVIEW TABLE							
ID	Agency	Agency Jurisdiction	County	Primary Issue	Corridor Location (by Milepost [MP])	Source	Agency Review and Analysis ^{1,2}
						<p>Comment on abstract: Re-route to avoid GRSG PACs.</p> <p>GIS Analysis: GRSG GHMA intersects corridor.</p>	
132-133 .006	BLM	Private and local government lands	Rio Blanco, CO	Colorado Pikeminnow critical habitat (ESA-listed: endangered)	Crosses in and out of corridor from MP 66 to MP 77	<p>RFI: consult with USFWS to avoid adverse modification to Colorado Pikeminnow critical habitat.</p> <p>GIS Analysis: critical habitat is adjacent to corridor and is present in corridor gaps</p>	The White River RMP has no ROW exclusion or avoidance prescriptions for a utility corridor being within Colorado Pikeminnow critical habitat. Areas of ESA aquatic species habitat is considered for responsible energy development during an application review; however, it may not be feasible to completely avoid ESA aquatic species habitat while determining viable routes which overall, minimize natural and cultural resource impacts through the corridor-level planning across vast landscapes. (3)
132-133 .007				Special Status Species	Not specified.	<p>Comment on abstract: Additional species not identified in the corridor abstract may be present: Canada Lynx, North American Wolverine, Mexican Spotted Owl, Western Yellow-billed Cuckoo, Bonytail Chub, Humpback Chub, Razorback Sucker, Greenback Cutthroat Trout, DeBeque Phacelia, Dudley Bluffs Bladderpod, Dudley Bluffs Twinpod, Parachute Beardtongue, and Ute Ladies'-tresses.</p> <p>Conduct further analysis to determine the presence of abovementioned species.</p>	This corridor location within the current range where these species may occur is not easily resolved or avoided by corridor-level planning because alternate routes would still require siting through the current range of these species. Further analysis to determine the presence of all species occurring within the area will be considered outside of corridor-level planning. (3)

CORRIDOR 132-133 REVIEW TABLE

ID	Agency	Agency Jurisdiction	County	Primary Issue	Corridor Location (by Milepost [MP])	Source	Agency Review and Analysis ^{1,2}
Lands with Wilderness Characteristics							
132-133 .008	BLM	Grand Junction FO and White River FO, and Little Snake FO	Mesa and Rio Blanco, CO	Lands with wilderness characteristics	Not specified.	RFI: BLM-identified potential lands with wilderness characteristics: Blair Mountain/Greasewood, CO-070-302 and 032 Crooked Wash, Old #s 285 and 291, AECOM #479, Ernie Howard Gulch, and South Shale Ridge	The BLM retains broad discretion regarding the multiple use management of lands possessing wilderness characteristics without Wilderness or WSA designations. As such, land possessing the characteristics of wilderness are not subject to the legal thresholds or other statutory obligations specified for congressionally designated Wilderness and WSAs. There are necessities that warrant land use and thus rationalize energy corridors as meeting the best siting principles, which include maximizing utility while minimizing impacts. In locations where the BLM is not managing lands with wilderness characteristics with protective allocations, project level planning will still consider ways to minimize or avoid impacts while meeting the purpose and need of various types of land use including energy projects. Furthermore, the impairment of wilderness characteristics does not, in and of itself, constitute a significant impact; or on its own, warrant the relocation of a corridor or corridor segment. BLM must consider all resources and resource uses and carefully weigh the current value for the present generation as well as for future generations. At this time, given the information available the corridor is determined as best meeting the siting principles of the settlement agreement. (1)
					MP 60 to MP 63	GIS Analysis and Agency Input: lands with wilderness characteristics Unit 8-Ernie Howard Gulch intersects corridor.	
					MP 72 to MP 76	Comment on abstract: corridor intersects with BLM wilderness-quality lands. 831 acres overlap (Ernie Howard Gulch-BLM). GIS Analysis and Agency Input: lands with wilderness characteristics Unit 13-Blair Mountain/Greasewood intersects corridor.	
					MP 84 to MP 93	Comment on abstract: corridor intersects with BLM wilderness-quality lands. 360 acres overlap (Blair Mountain/Greasewood-BLM). GIS Analysis: Crooked Wash lands with wilderness characteristics intersects corridor.	

CORRIDOR 132-133 REVIEW TABLE							
ID	Agency	Agency Jurisdiction	County	Primary Issue	Corridor Location (by Milepost [MP])	Source	Agency Review and Analysis ^{1,2}
					MP 6 to MP 8	<p>Comment on abstract: corridor intersects with BLM wilderness-quality lands. 1,655 acres overlap (Crooked Wash-BLM).</p> <p>GIS Analysis: South Shale Ridge lands with wilderness characteristics intersects corridor.</p> <p>Comment on abstract: corridor intersects with BLM wilderness-quality lands. 623 acres overlap (South Shale Ridge-BLM)</p> <p>Exclude energy corridors from all wilderness-quality lands</p>	
132-133 .009				Citizens' proposed wilderness inventoried lands with wilderness characteristics	Not specified.	RFI: South Shale Ridge	The BLM's current inventory findings will be used in land use planning analyses related to the revision, deletion, or addition to the energy corridors. Consideration of citizens' wilderness proposals is beyond the Agencies scope and authority. As such, the corridor's current location best meets the siting principles. (1) At such time that citizens' inventory information is formally submitted, the BLM will compare its official Agency inventory information with the submitted materials, determine if the conclusion reached in previous BLM inventories remains valid, and update findings regarding the lands ability to qualify as wilderness in character.

CORRIDOR 132-133 REVIEW TABLE

ID	Agency	Agency Jurisdiction	County	Primary Issue	Corridor Location (by Milepost [MP])	Source	Agency Review and Analysis ^{1,2}
Visual Resources							
132-133 .010	BLM	Grand Junction FO and White River FO	Mesa, Garfield, and Rio Blanco, CO	VRM Class II	MP 0, MP 1 to MP 8, MP 9, MP 14 to MP 15, MP 17 to MP 19, MP 20 to MP 22, MP 70 to MP 78 MP 7 to MP 8 MP 69 to MP 77	GIS Analysis: VRM Class II areas and corridor intersect. Agency Input: South Shale Ridge ACEC intersects VRM Class II areas of the corridor. Agency Input: White River ACEC intersects VRM II areas of corridor.	Future development within the corridor could be limited as VRM Class II allows for low level of change to the characteristic landscape. Management activities may be seen, but should not attract the attention of the casual observer. (3)
132-133 .011	BLM	Grand Junction FO, White River FO, and Little Snake FO	Garfield, Rio Blanco, and Moffat, CO	VRM Class III	MP 8 to MP 15, MP 17 to MP 18, MP 23 to MP 24, MP 29 to MP 30, MP 32 to MP 63, MP 64 to MP 66, M 67 to MP 76, MP 77 to MP 90, M 92 to MP 93, MP 94, MP 96 to MP 98, MP 99 to MP 100, MP 101, MP 103	GIS Analysis: VRM Class III areas and corridor intersect.	VRM Class III allows for moderate change to the characteristic landscape, although minimizing visual contrast remains a requirement. Management activities may attract the attention of the casual observer, but shall not dominate the view. (1)
Cultural Resources							
132-133 .012	NA	Private land	Mesa, CO	De Beque House	MP 6	GIS Analysis: property listed on NRHP in corridor gap.	The NRHP property is not in the designated corridor and are therefore not a consideration for corridor-level planning. Section 106 process would be followed to identify any possible impact of development during the ROW application process. (3)
132-133 .013	NA	Private land	Mesa, CO	IOOF Hall	MP 6	GIS Analysis: property listed on NRHP in corridor gap.	The NRHP property is not in the designated corridor and are therefore not a consideration for corridor-level planning. Section 106 process would be

CORRIDOR 132-133 REVIEW TABLE							
ID	Agency	Agency Jurisdiction	County	Primary Issue	Corridor Location (by Milepost [MP])	Source	Agency Review and Analysis ^{1,2}
							followed to identify any possible impact of development during the ROW application process. (3)
Land Use Concerns							
<i>Corridor pinched by BLM or USFS authorized use</i>							
132-133 .014	BLM	White River FO	Rio Blanco and Garfield, CO	Existing infrastructure	MP 51 to MP 52, MP 11 to MP 12	GIS Analysis: corridor congested with gathering and transmission pipeline infrastructure.	Existing infrastructure could affect potential for additional development within the corridor. (3)
132-133 .015	BLM	Grand Junction FO	Garfield, CO	Mountainous area, private land	MP 17 to MP 19	GIS Analysis: mountainous area with private lands in corridor gap.	Mountainous terrain could affect potential for additional development within the corridor. (3)
Other noted land use concerns							
132-133 .016	State	Colorado Parks and Wildlife		Conservation easements	Not specified.	Comment on abstract: corridor crosses private lands encumbered by conservation easements or CPW-owned properties, which are managed for wildlife, wildlife related recreation, and other recreational uses. In many instances, corridor development would be incompatible with the purpose for which those properties were acquired and are managed. Recommend avoiding CPW properties for corridor alignments, otherwise close pre-planning and coordination with CPW staff would be required. In instances where an easement prohibits corridor development and avoidance of the parcel is not possible, and the exercise of eminent domain may result, then the lost conservation values due to corridor	BLM can only authorize land uses on public land. Any gaps between public land within a new proposal would have to be coordinated with those landowners/managers. Since the corridor is centered on the existing rights-of-way/easements, additional uses may be compatible within that footprint, depending on how the conservation easements and the easements across non-BLM managed lands are written. (3)

CORRIDOR 132-133 REVIEW TABLE							
ID	Agency	Agency Jurisdiction	County	Primary Issue	Corridor Location (by Milepost [MP])	Source	Agency Review and Analysis ^{1, 2}
						development must be compensated for and replaced.	

¹ Projects proposed in the corridor would be reviewed during their ROW application review process and would adhere to Federal laws, regulations, and policy.

² (1) = confirm existing corridor best meets siting principles; (2) = identify opportunities to improve corridor placement or IOPs; (3) = acknowledge concern not easily resolved or avoided by corridor-level planning.

Abstract Acronyms and Abbreviations

ACEC = Area of Critical Environmental Concern; BLM = Bureau of Land Management; CPW = Colorado Parks and Wildlife; ESA = Endangered Species Act; FO = Field Office; GHMA = General Habitat Management Area; GIS = geographic information system; GRSG = Greater Sage-grouse; IOOF = Independent Order of Odd Fellows; IOP = Interagency Operating Procedure; MP = milepost; NA = not applicable; NEPA = National Environmental Policy Act; NRHP = National Register Historic Place; NWCO = Northwest Colorado; PAC = Priority Area for Conservation; PEIS = Programmatic Environmental Impact Statement; PHMA = Priority Habitat Management Area; RFI = request for information; RMP = Resource Management Plan; ROW = right-of-way; USFS = U.S. Forest Service; USFWS = U.S. Fish and Wildlife Service; VRM = Visual Resource Management; WWEC = West-wide Energy Corridor.