

# Corridor 256-257

## North Ogden Corridor

### Corridor Rationale

Input regarding alignment from American Wind Energy Association, the Idaho Power Company, National Grid, the Rocky Mountain Area Transmission Study, the Seams Steering Group-Western Interconnection, PacifiCorp, Trans West, and the Western Utility Group during the WWEC PEIS suggested following this route. There is a planned 500-kV transmission line project that generally follows the path of the corridor. Currently, there are no pending or recently authorized transmission line or pipeline projects within the corridor.

#### Corridor location:

Utah (Box Elder and Weber Co.)  
USFS: Uinta-Wasatch-Cache National Forest  
Regional Review Region(s): Region 3

#### Corridor width, length:

Width variable 345 to 2,640 ft (corridor was previously designated at 2,640 ft with reduced-width through IRAs)  
2.8 miles of designated corridor  
3.4 mile-posted route, including gaps

#### Sec 368 energy corridor restrictions: (N)

- corridor is multi-modal

#### Corridor of concern (N)

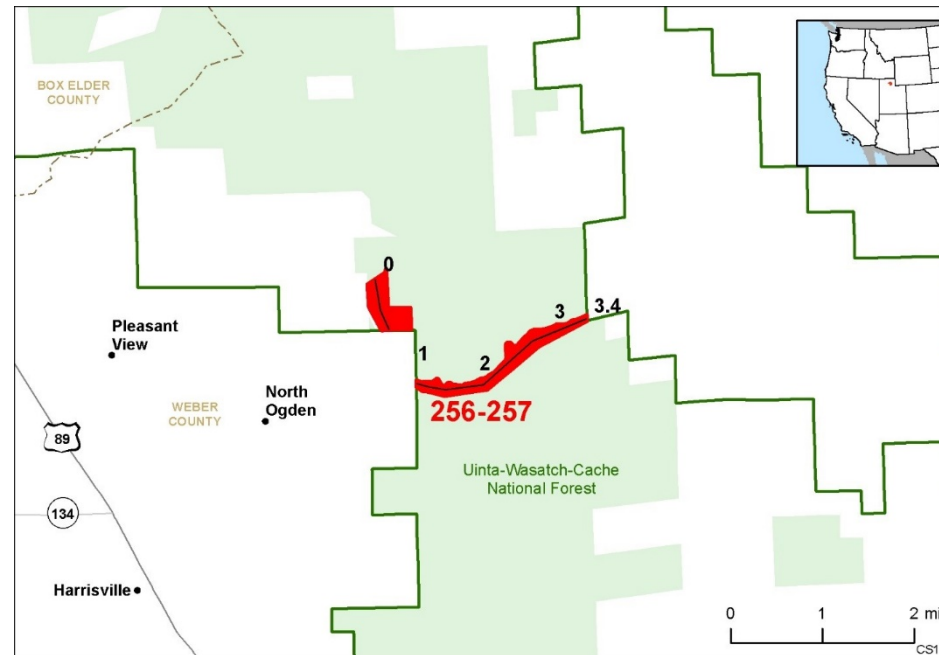


Figure 1. Corridor 256-257

#### Corridor history:

- Locally designated corridor prior to 2009 (Y)
- Existing infrastructure (Y)
  - Electric transmission:
    - 2 230-kV lines (MP 1 to MP 3)
- Energy potential near the corridor (Y)
  - hydroelectric plant (4 MW) as close as 5 mi (MP 1)
- Corridor changes since 2009 (N)

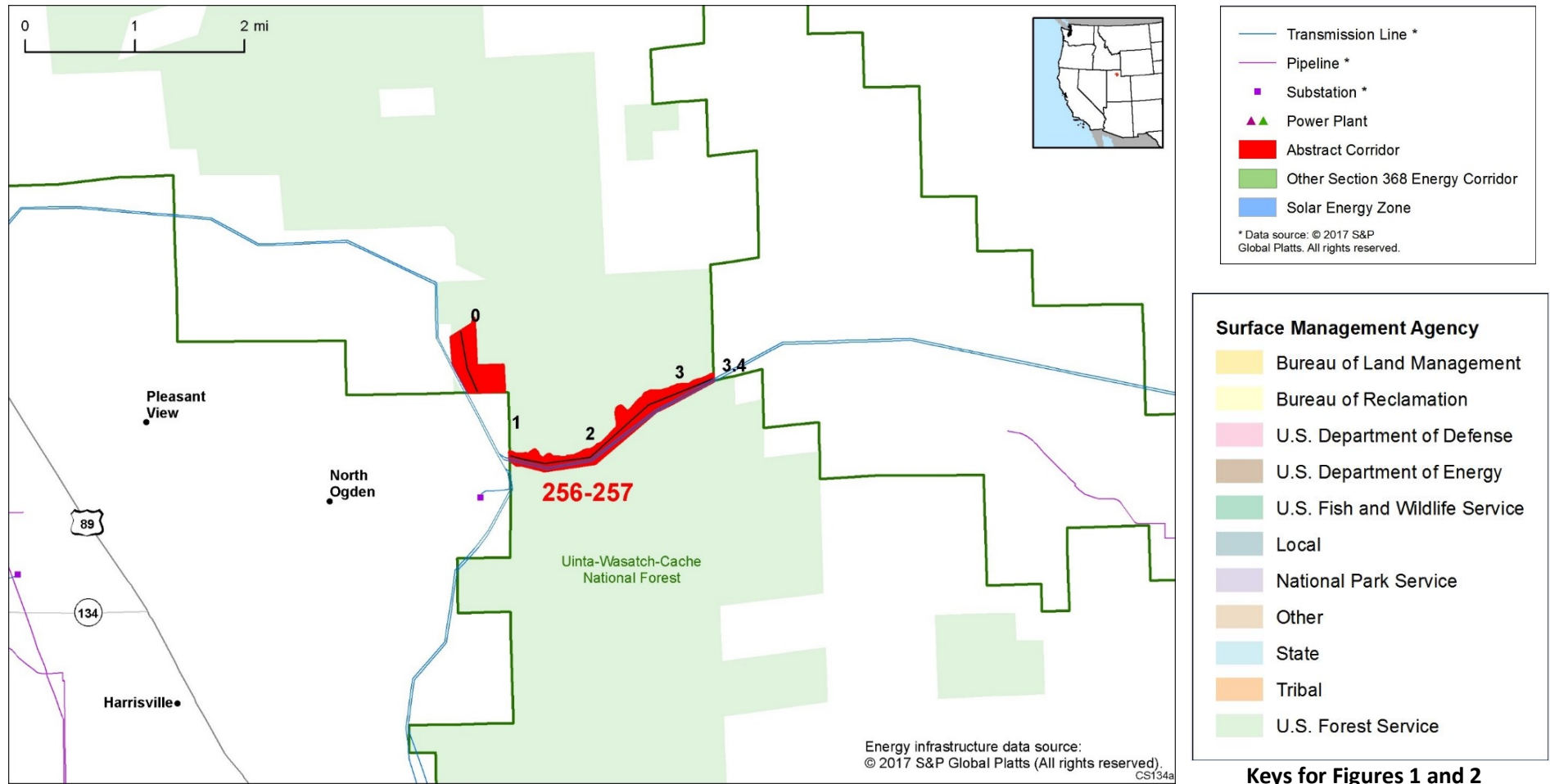
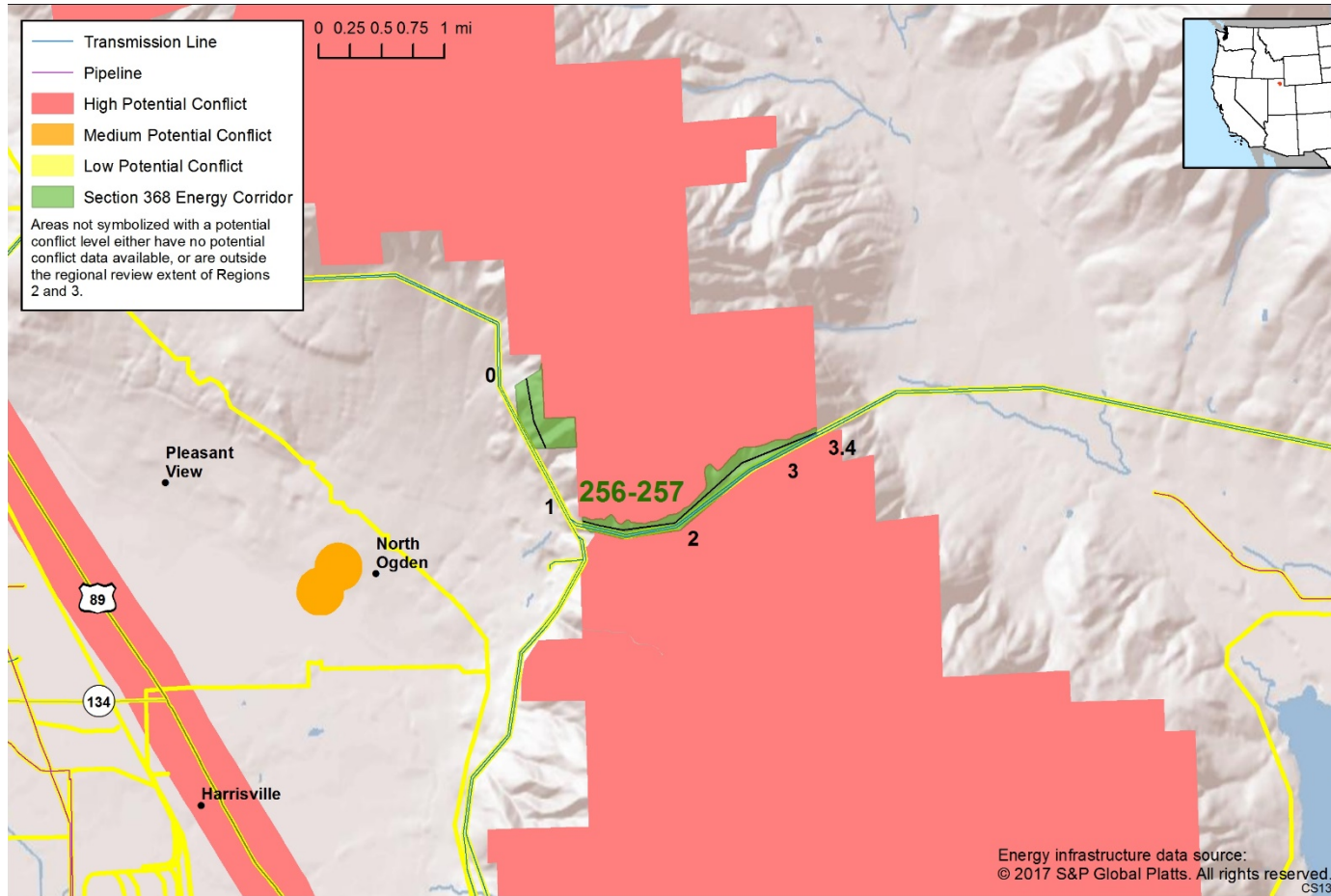


Figure 2. Corridor 256-257 and nearby electric transmission lines and pipelines

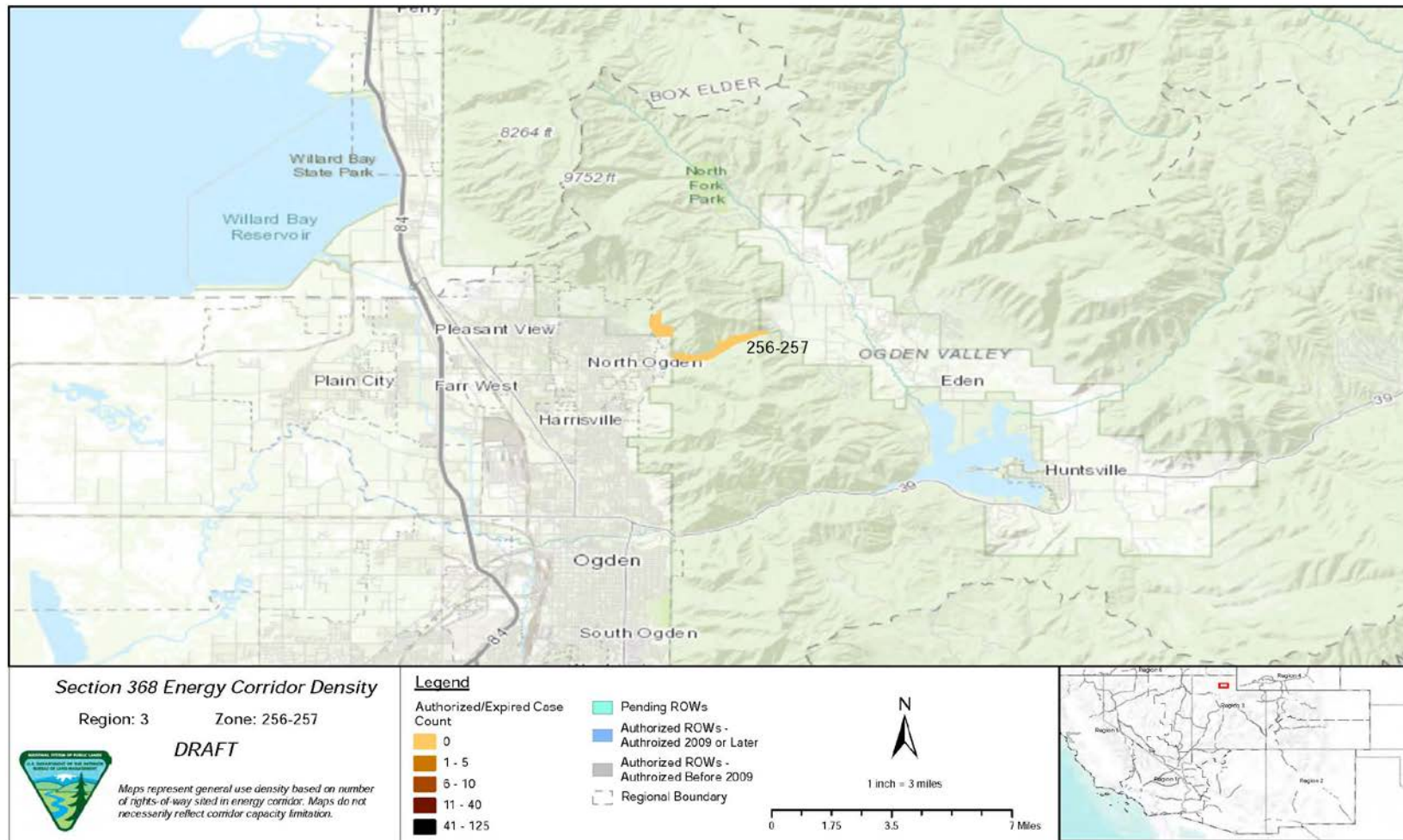
## Conflict Map Analysis



**Figure 3. Map of Conflict Areas in Vicinity of Corridor 256-257**

Figure 3 reflects a comprehensive resource conflict assessment developed to enable the Agencies and stakeholders to visualize a corridor’s proximity to environmentally sensitive areas and to evaluate options for routes with lower potential conflict. The potential conflict assessment (low, medium, high) shown in the figure is based on [criteria](#) found on the WWEC Information Center at [www.corridoreis.anl.gov](http://www.corridoreis.anl.gov). To meet the intent of the Energy Policy Act and the Settlement Agreement siting principles, corridors may be located in areas where there is potentially high resource conflict; however, where feasible, opportunity for corridor revisions should be identified in areas with potentially lower conflict.

Visit the 368 Mapper for a full view of the Potential conflict map (<https://bogi.evs.anl.gov/section368/portal/>)



**Figure 4. Corridor 256-257, Corridor Density Map**

Figure 4 shows the density of energy use to assist in evaluating corridor utility. ROWs granted prior to the corridor designation (2009) are shown in grey; ROWs granted after corridor designation are shown in blue; and pending ROWs under current review for approval are shown in turquoise. Note the ROW density shown for the corridor is only a snapshot that does not fully illustrate remaining corridor capacity. Not all ROWs have GIS data at the time this abstract was developed. BLM and USFS are currently improving their ROW GIS databases and anticipate more complete data in the near future.

## General Stakeholder Feedback on Corridor Utility

The State of Utah believes that the corridor plays an important role for existing and future energy infrastructure in Weber County, and requests that no change are made to the existing alignment of the corridor.

## Corridor Review Table

The table below captures details of the Agencies' review of the energy corridor. Consideration of the general corridor siting principles of the 2012 Settlement Agreement framed each corridor review, to identify potential improvements to maximize corridor utility and minimize impacts on the environment. Initial Agency analysis is provided to facilitate further discussion during stakeholder workshops.

CORRIDOR 256-257 REVIEW TABLE							
ID	Agency	Agency Jurisdiction	County	Primary Issue	Corridor Location (by Milepost [MP])	Source	Agency Review and Analysis <sup>1,2</sup>
<b>ENVIRONMENTAL RESOURCE ISSUES</b>							
<i>Specially Designated Areas</i>							
256-257 .001	USFS	Uinta-Wasatch-Cache National Forest	Weber, UT	Lewis Peak IRA	MP 1 to MP 3	GIS Analysis: IRA adjacent to corridor.	The corridor is not located in the IRA and development and management inside of the corridor would not be affected. Because the IRA is adjacent to the corridor, the opportunity to expand or shift the corridor is limited. (1)
256-257 .002	USFS	Uinta-Wasatch-Cache National Forest	Weber, UT	Willard IRA	MP 0 to MP 3	GIS Analysis: IRA adjacent to corridor on USFS land.	The corridor is not located in the IRA and development and management inside of the corridor would not be affected. Because the IRA is adjacent to the corridor, the opportunity to expand or shift the corridor is limited. (1)
<i>Ecology</i>							
256-257 .003	USFS	Uinta-Wasatch-Cache National Forest	Weber, UT	CHAT Resources	MP 1 to MP 3	RFI: consult closely with state fish and game Agencies and WGA to implement the full mitigation hierarchy of avoidance, minimization, and compensation for CHAT resources at "Very High" risk.  GIS Analysis: Crucial Habitat Ranking of 2.	Wildlife habitat is an important consideration but further analysis is not a consideration for corridor-level planning. (3)

**CORRIDOR 256-257 REVIEW TABLE**

ID	Agency	Agency Jurisdiction	County	Primary Issue	Corridor Location (by Milepost [MP])	Source	Agency Review and Analysis <sup>1,2</sup>
						Agency Input: The CHAT ranking of 2 is due to the species of concern and habitat intactness. CHAT rankings are based on state wildlife Agency data and are used in initial project pre-planning for large-scale development projects. CHAT rankings are non-regulatory and are not intended for project level planning.	
256-257 .004				Special status species	Not specified.	Comment on abstract: threatened and endangered species that may occur along this corridor include Western Yellow-billed Cuckoo and Ute Ladies'-tresses. Projects taking place in this corridor may require ESA Section 7 consultation with the USFWS. We recommend that projects within this corridor are evaluated for impacts to listed species and their habitats, and measures are included to avoid, minimize, and mitigate impacts.	This corridor location within the current range where the Western Yellow-billed Cuckoo or Ute Ladies'-tresses may occur is not easily resolved or avoided by corridor-level planning because alternate routes would still require siting through the current range of these species. (3)
<b>Land Use Concerns</b>							
<b>Other noted land use concerns</b>							
256-257 .005	NA	Private lands		Agricultural lands	Not specified.	Comment on abstract: energy development may have impact on agriculture in adjacent areas if not developed and maintained properly (e.g., invasive and noxious weed species). Ensure that all developments, changes, or alterations to energy corridors do not adversely affect agriculture and domestic	Corridor-level planning does not entail the detail necessary to prescribe operation and maintenance procedures on hypothetical projects or corridor revisions. The concern will be addressed with specific, current information at the time of energy development proposal(s). (3)

CORRIDOR 256-257 REVIEW TABLE							
ID	Agency	Agency Jurisdiction	County	Primary Issue	Corridor Location (by Milepost [MP])	Source	Agency Review and Analysis <sup>1, 2</sup>
						livestock grazing in the affected areas.	

<sup>1</sup> Projects proposed in the corridor would be reviewed during their ROW application review process and would adhere to Federal laws, regulations, and policy.

<sup>2</sup> (1) = confirm existing corridor best meets siting principles; (2) = identify opportunities to improve corridor placement or IOPs; (3) = acknowledge concern not easily resolved or avoided by corridor-level planning.

### Abstract Acronyms and Abbreviations

BLM = Bureau of Land Management; CHAT = Crucial Habitat Assessment Tool; ESA = Endangered Species Act; GIS = geographic information system; IOP = interagency operating procedure; IRA = Inventoried Roadless Area; MP = milepost; PEIS = Programmatic Environmental Impact Statement; RFI = request for information; ROW = right-of-way; USFS = U.S. Forest Service; USFWS = U.S. Fish and Wildlife Service; WGA = Western Governors’ Association; WWEC = West-wide Energy Corridor.