

Corridor 43-44

Goshute Valley to Toano Draw

Corridor Rationale

This energy corridor provides north-south connectivity between Idaho and Las Vegas, Nevada. Input regarding alignment from AWEA, the Idaho Power Company, Maximus USA, the Rocky Mountain Area Transmission Study, and the Western Utility Group during the WWEC PEIS suggested following this route. A planned 500-kV electric transmission line generally follows the corridor. Currently, there are no pending or recently authorized ROWs for transmission lines or pipelines within the corridor.

Corridor location:

Nevada (Elko Co.)
BLM: Wells Field Office
Regional Review Region(s): Region 3

Corridor width, length:

Width 15,840 ft
16.5 miles of designated corridor
18.8 mile-posted route, including gaps

Sec 368 energy corridor restrictions: (N)

- corridor is multi-modal

Corridor of concern (N)

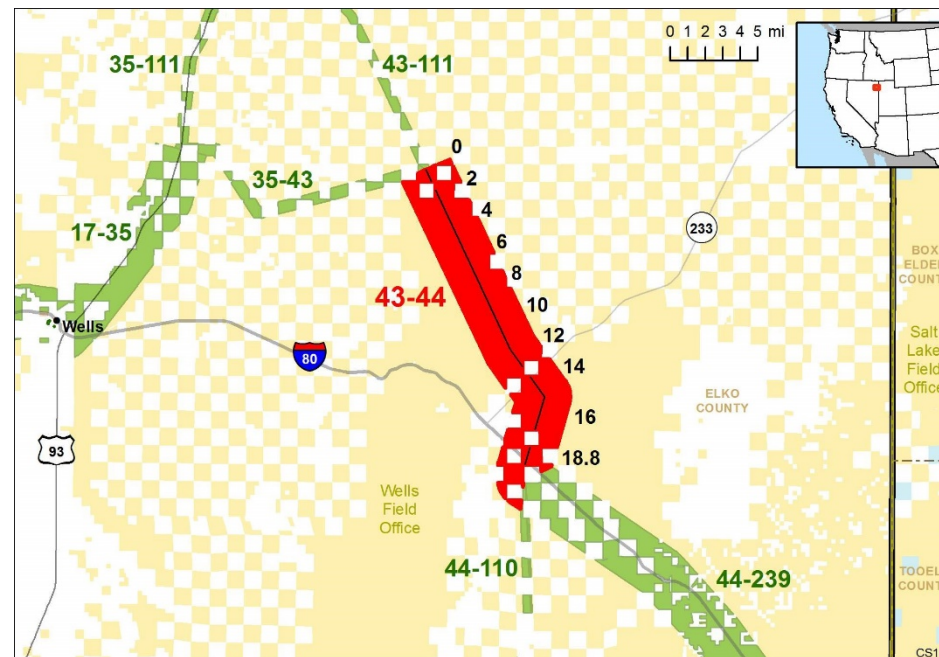


Figure 1. Corridor 43-44

Corridor history:

- Locally designated corridor prior to 2009 (Y)
- Existing infrastructure (N)
- Energy potential near the corridor (N)
- Corridor changes since 2009 (Y)
 - 2015 NVCA ARMPA for GRSG narrowed ROW corridors to no more than 3,500 ft within PHMAs and GHMAs on BLM-administered land.

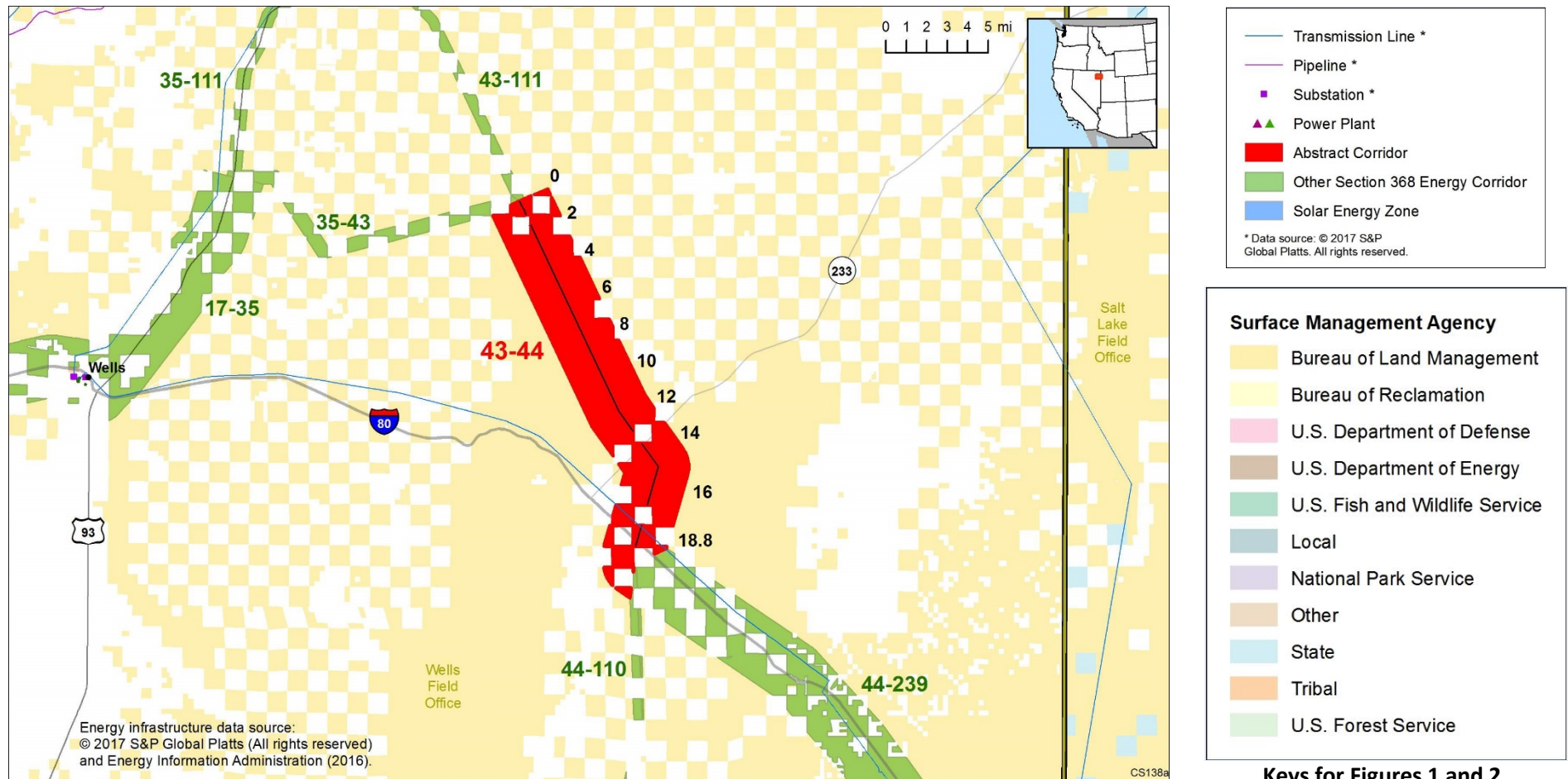


Figure 2. Corridor 43-44 and nearby electric transmission lines and pipelines

Conflict Map Analysis

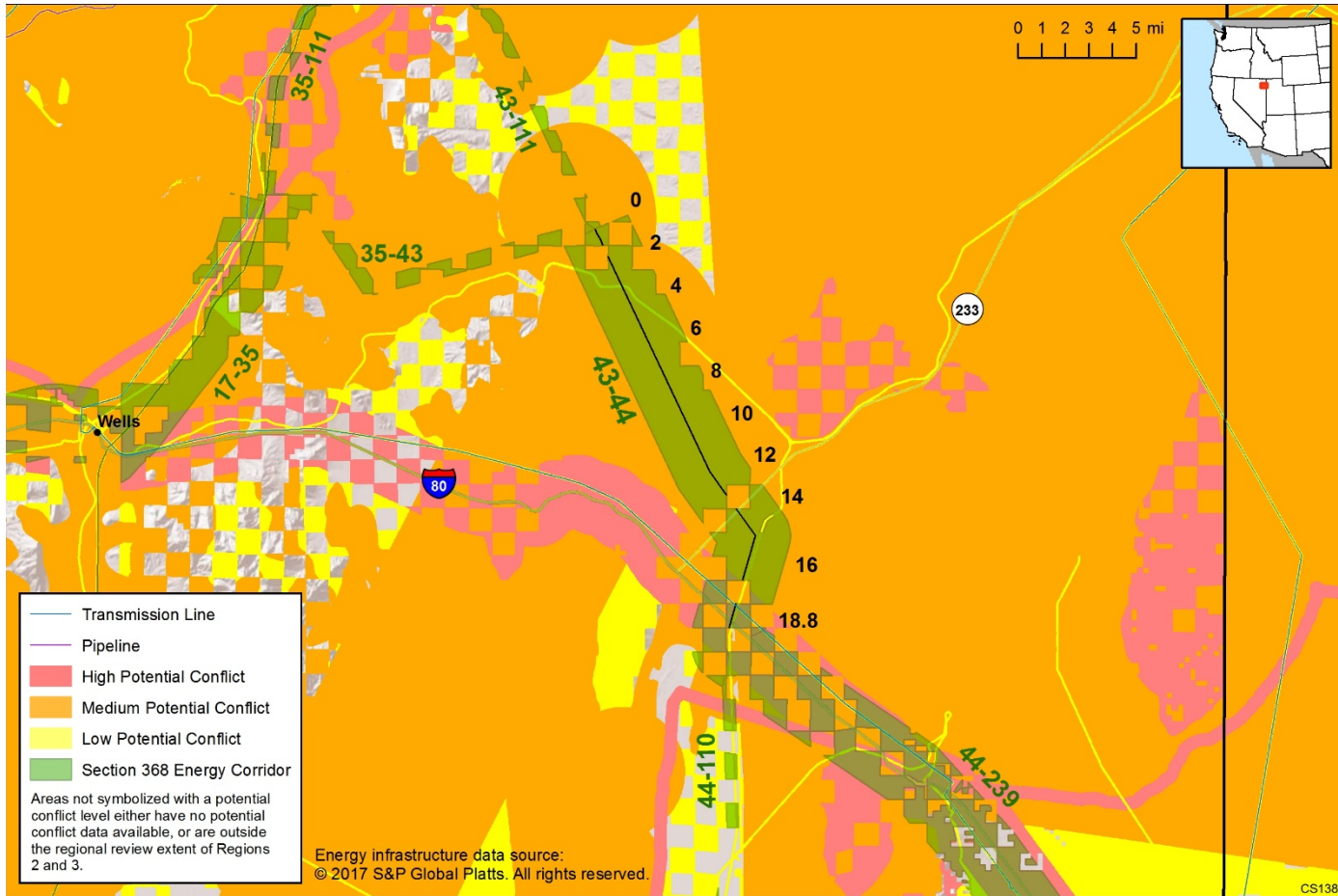


Figure 3. Map of Conflict Areas in Vicinity of Corridor 43-44

Figure 3 reflects a comprehensive resource conflict assessment developed to enable the Agencies and stakeholders to visualize a corridor’s proximity to environmentally sensitive areas and to evaluate options for routes with lower potential conflict. The potential conflict assessment (low, medium, high) shown in the figure is based on [criteria](#) found on the WWEC Information Center at www.corridoreis.anl.gov. To meet the intent of the Energy Policy Act and the Settlement Agreement siting principles, corridors may be located in areas where there is potentially high resource conflict; however, where feasible, opportunity for corridor revisions should be identified in areas with potentially lower conflict.

Visit the 368 Mapper for a full view of the Potential conflict map (<https://bogi.evs.anl.gov/section368/portal/>)

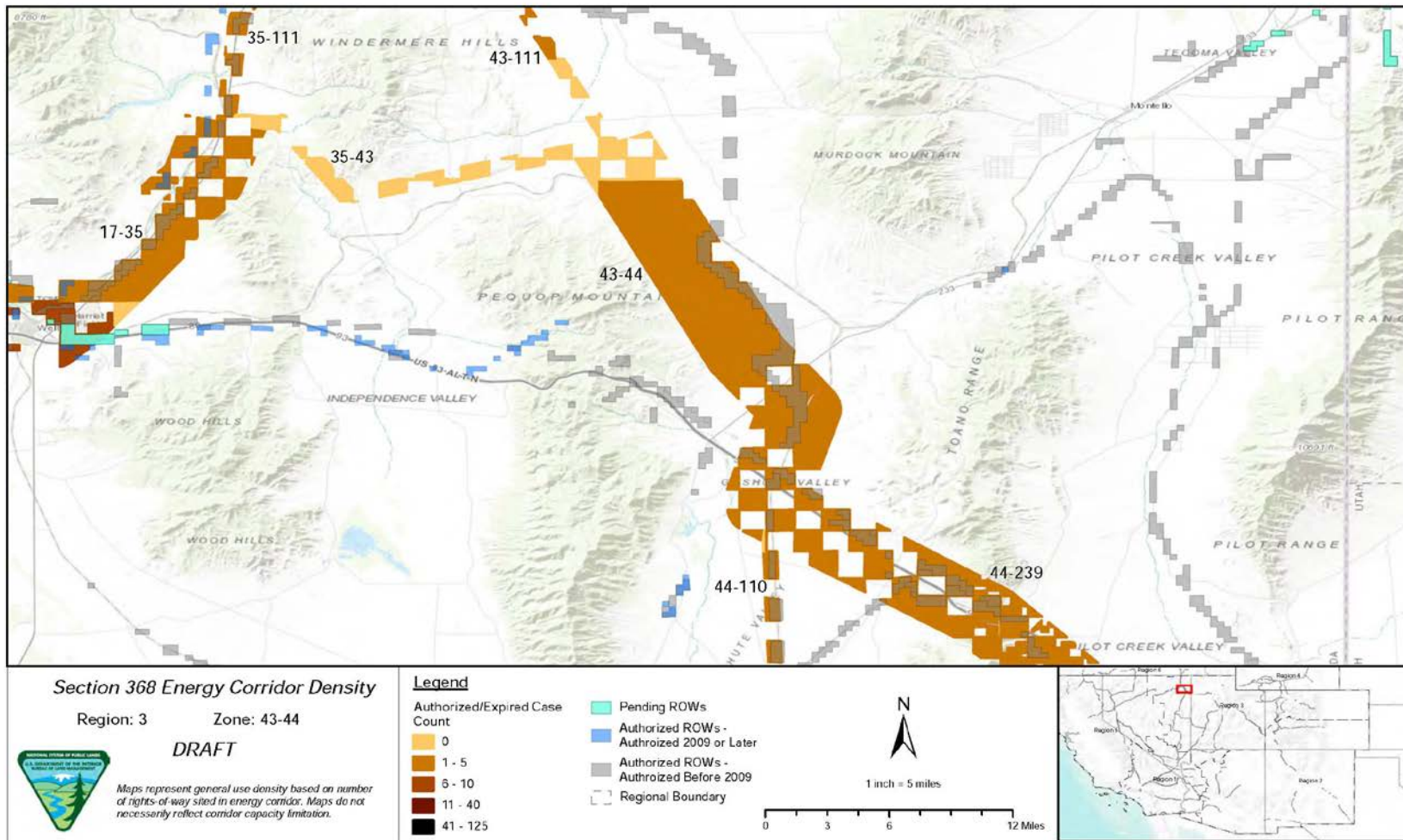


Figure 4. Corridor 43-44, Corridor Density Map

Figure 4 shows the density of energy use to assist in evaluating corridor utility. ROWs granted prior to the corridor designation (2009) are shown in grey; ROWs granted after corridor designation are shown in blue; and pending ROWs under current review for approval are shown in turquoise. Note the ROW density shown for the corridor is only a snapshot that does not fully illustrate remaining corridor capacity. Not all ROWs have GIS data at the time this abstract was developed. BLM and USFS agencies are currently improving their ROW GIS databases and anticipate more complete data in the near future.

General Stakeholder Feedback on Corridor Utility

Stakeholders did not provide specific input on corridor utility.

Corridor Review Table

The table below captures details of the Agencies’ review of the energy corridor. Consideration of the general corridor siting principles of the 2012 Settlement Agreement framed each corridor review, to identify potential improvements to maximize corridor utility and minimize impacts on the environment. Initial Agency analysis is provided to facilitate further discussion during stakeholder workshops.

CORRIDOR 43-44 REVIEW TABLE							
ID	Agency	Agency Jurisdiction	County	Primary Issue	Corridor Location (by Milepost [MP])	Source	Agency Review and Analysis ^{1,2}
ENVIRONMENTAL RESOURCE ISSUES							
<i>Specially Designated Areas</i>							
43-44 .001	BLM	Wells FO and Private land	Elko, NV	Four Trails Feasibility Study Trail	MP 19	GIS Analysis: Four Trails study trail as close as 1 mi south of corridor.	There is an opportunity for the Agencies to consider adding an IOP for NSTs and NHTs as well as adding an IOP related to Visual Resources to ensure appropriate consideration occurs with proposed development within the energy corridor. (2)
Ecology							
43-44 .002	BLM	Wells FO	Elko, NV	Greater Sage-grouse (GRSG) (BLM and USFS sensitive species, not listed under ESA)		RFI: delete/replace corridor-84% overlap with GRSG PACs.	Per BLM land use plan prescription, the current alignment avoids PHMA to the greatest extent possible while maintaining a preferred route for potential future energy development to be collocated with existing infrastructure (per BLM regulation). The corridor was also narrowed to a maximum of 3,500 ft. wide during the 2015 NVCA ARMPA for GRSG. As such, the current alignment of the corridor best meets the siting principles. (1)
				GRSG PHMA	MP 0 to MP 14	Comment on abstract: apply a 4-mi buffer around corridor. This corridor contains 61,530 acres of GRSG PHMAs and 41,505 acres of GRSG GHMAs. These categories of habitat are essential for the GRSG life cycle. GIS Analysis: GRSG PHMA intersects corridor.	
				GRSG GHMA	MP 3 to MP 4, MP 13 to MP 19	GIS Analysis: GRSG GHMA intersects corridor.	

CORRIDOR 43-44 REVIEW TABLE							
ID	Agency	Agency Jurisdiction	County	Primary Issue	Corridor Location (by Milepost [MP])	Source	Agency Review and Analysis ^{1,2}
						Comment on abstract: Delete/replace: 84% overlap with GRSG PACs.	
43-44 .003	BLM	Wells FO	Elko, NV	GRSG Lek locations	MP 2 to MP 3 MP 4 to MP 6 MP 8 to MP 10	<p>Comment on abstract: 1 lek with a currently unknown activity status.</p> <p>1 pending status lek, and 1 unknown status lek. These sites are crucial for breeding season.</p> <p>Each of these areas contain 2 active status leks, These sites are crucial for breeding season.</p> <p>Unknown status means that more information or data needs to be collected at this time, but this is likely to be a significant area for breeding.</p> <p>Pending status indicates that GRSG breeding activity has been observed at this site and the site is awaiting additional data collection.</p>	Individual GRSG leks are an important natural resource taken into consideration for responsible energy development during an application review. Further analysis to determine the presence of GRSG leks occurring within the area will be considered outside of corridor-level planning. (3)
43-44 .004				Special Status Species	Not specified.	<p>Comment on abstract: Additional species not identified in the corridor abstract may be present: Western Yellow-billed Cuckoo, Independence Valley Speckled Dace, and Lahontan Cutthroat Trout.</p> <p>Conduct further analysis to determine the presence of abovementioned species.</p>	The corridor location within the current range where these species may occur is not easily resolved or avoided by corridor-level planning. Further analysis to determine the presence of all species occurring within the area will be considered outside the corridor-level planning. (3)
43-44 .005	BLM	Wells FO	Elko, NV	Mule Deer	MP 4 to MP 16	Comment on abstract: these areas have been identified as crucial winter habitat for Mule	Ungulate winter habitat is an important consideration but further analysis of

CORRIDOR 43-44 REVIEW TABLE							
ID	Agency	Agency Jurisdiction	County	Primary Issue	Corridor Location (by Milepost [MP])	Source	Agency Review and Analysis ^{1,2}
						Deer and should be avoided if at all possible. If avoidance is not possible, extra planning and/or measures should be incorporated to reduce or minimize impacts to this habitat.	this species is not a consideration for corridor-level planning. (3).
Visual Resources							
43-44 .006	BLM	Wells FO	Elko, NV	VRM Class II	MP 17 to MP 19	GIS Analysis: VRM Class II area and corridor intersect.	Future development within the corridor could be limited as VRM Class II allows for low level of change to the characteristic landscape. Management activities may be seen, but should not attract the attention of the casual observer. (3)
43-44 .007	BLM	Wells FO	Elko, NV	VRM Class IV	MP 0 to MP 17	GIS Analysis: VRM Class IV areas and corridor intersect.	The existing corridor location best meets the siting principles. (1)
Cultural Resources							
43-44 .008	BLM	Wells FO	Elko, NV	Cultural resources	Not specified.	Agency Input: portions of this corridor are known to have a high concentration of sensitive cultural resources, such as prehistoric sites, antelope traps, and historic railroad.	The cultural resources mentioned are a concern for the Agencies which cannot be resolved during corridor-level planning. Existing IOPs specific to cultural resources and tribal consultation would be followed in connection with any proposed energy project in the corridor. (3)
Land Use Concerns							
Military and Civilian Aviation							
43-44 .009	BLM	Wells FO	Elko, NV	MTR – VR	MP 13 to MP 15	GIS Analysis: VR intersects corridor.	The concern related to MTRs is noted and the adherence to existing IOP regarding coordination with DoD would be required to ensure this potential conflict is considered at the appropriate time. In addition, there is an opportunity to consider a revision to the existing IOP to include height restrictions for corridors in the vicinity of DoD training routes. (2)
43-44 .010	BLM	Wells FO	Elko, NV	DoD SUA - MOA	MP 10 to MP 19	GIS Analysis: MOA intersects corridor. Comment on abstract: corridor is adjacent to the Utah Test and Training Range Operations. All Restricted Airspace needs to be avoided due to hazardous operations and access to any	

CORRIDOR 43-44 REVIEW TABLE							
ID	Agency	Agency Jurisdiction	County	Primary Issue	Corridor Location (by Milepost [MP])	Source	Agency Review and Analysis ^{1, 2}
						sites. Height should be no higher than existing structures if outside the Restricted Airspace.	

¹ Projects proposed in the corridor would be reviewed during their ROW application review process and would adhere to Federal laws, regulations, and policy.

² (1) = confirm existing corridor best meets siting principles; (2) = identify opportunities to improve corridor placement or IOPs; (3) = acknowledge concern not easily resolved or avoided by corridor-level planning.

Abstract Acronyms and Abbreviations

ARMPA = Approved Resource Management Plan Amendment; AWEA = American Wind Energy Association; BLM = Bureau of Land Management; DoD = Department of Defense; ESA = Endangered Species Act; FO = Field Office; GRSG = Greater Sage-grouse; GHMA = General Habitat Management Area; GIS = geographic information system; IOP = interagency operating procedure; LUPA = Land Use Plan Amendment; MOA = Military Operations Area; MP = milepost; MTR = Military Training Route; NHT = National Historic Trail; NST = National Scenic Trail; NVCA = Nevada and Northeastern California; PAC = Priority Area for Conservation; PEIS = Programmatic Environmental Impact Statement; PHMA = Priority Habitat Management Area; RFI = request for information; ROW = right-of-way; SUA = special use airspace; USFS = U.S. Forest Service; USFWS = U.S. Fish and Wildlife Service; VR = Visual Route; VRM = Visual Resource Management; WWEC = West-wide Energy Corridor.