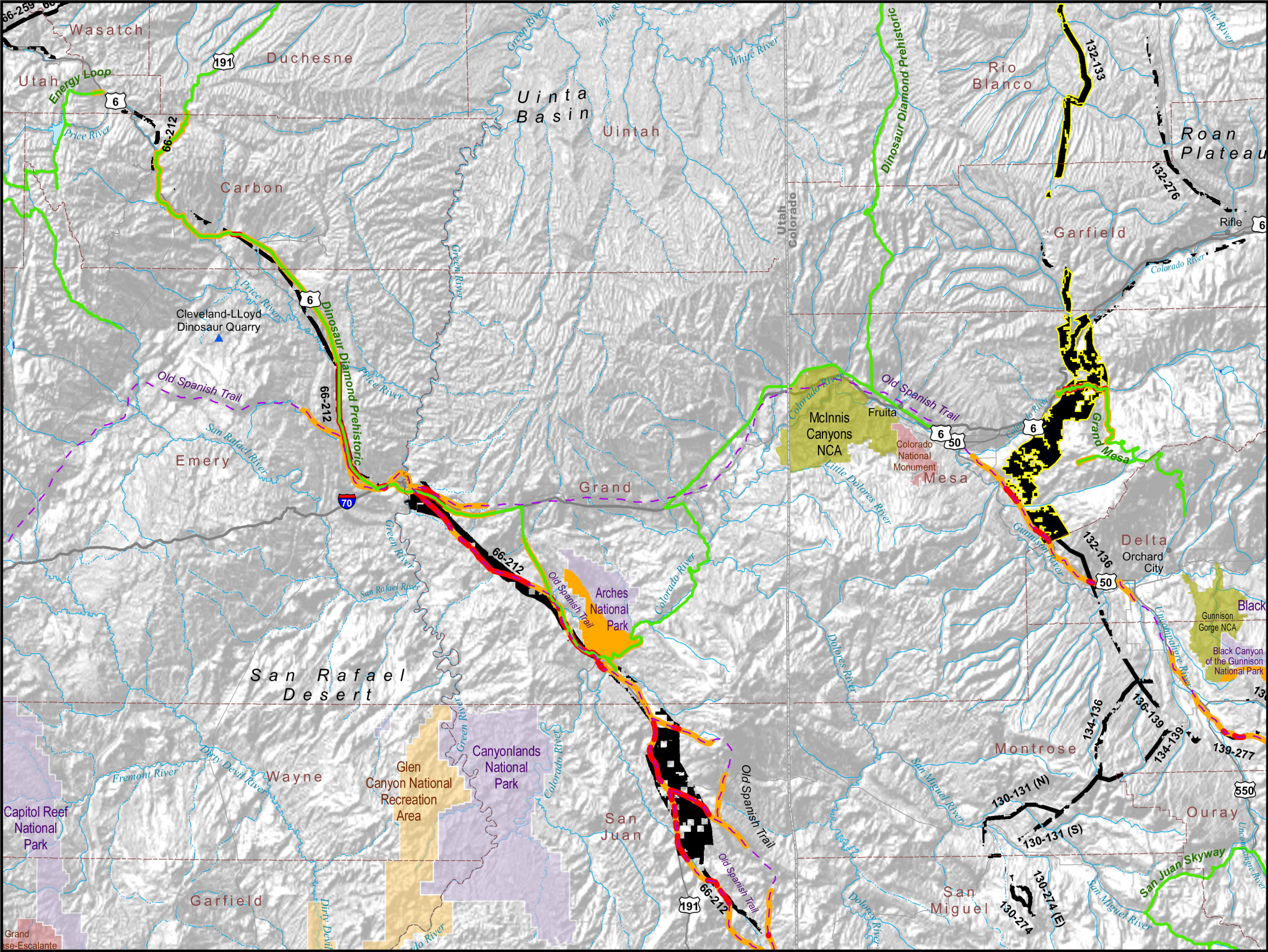
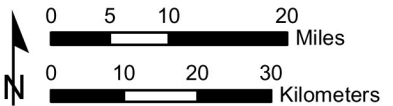


PART 3: VISUAL RESOURCE ANALYSIS MAP SERIES



Selected Potentially Sensitive Visual Resource Areas Within or Near Proposed Energy Corridors

MAP F6



- Energy Corridors Under the Proposed Action
- Locally Designated Portion of Proposed Corridors
- Point Features**
 - National Historic Landmark
 - National Natural Landmark
 - Landmarks Within 5 Miles of Energy Corridor
- Linear Features**
 - National Historic Trail
 - National Scenic Trail
 - National Scenic Highway
 - Wild and Scenic River
 - Linear Features Intersecting Energy Corridor
 - Linear Features Within 5 Miles of Energy Corridor
- Areal Features**
 - National Conservation Area
 - National Monument
 - National Park
 - Other National Park Service Resource
 - National Recreation Area
 - National Scenic Area
 - National Scenic Research Area
 - National Wildlife Refuge
 - Areal Features Intersecting Energy Corridor
 - Areal Features Within 5 Miles of Energy Corridor